



VALKYRIE AB

ADDRESSABLE BEACON

MADE IN PORTUGAL - EU

GLOBAL FIRE EQUIPMENT S.A.

Parque Industrial Municipal da Barracha, 8150-017 São Brás de Alportel - PORTUGAL | Tel: +351 289 896 560
Email: info@globalfire-equipment.com | Technical Support: techs@globalfire-equipment.com | www.globalfire-equipment.com

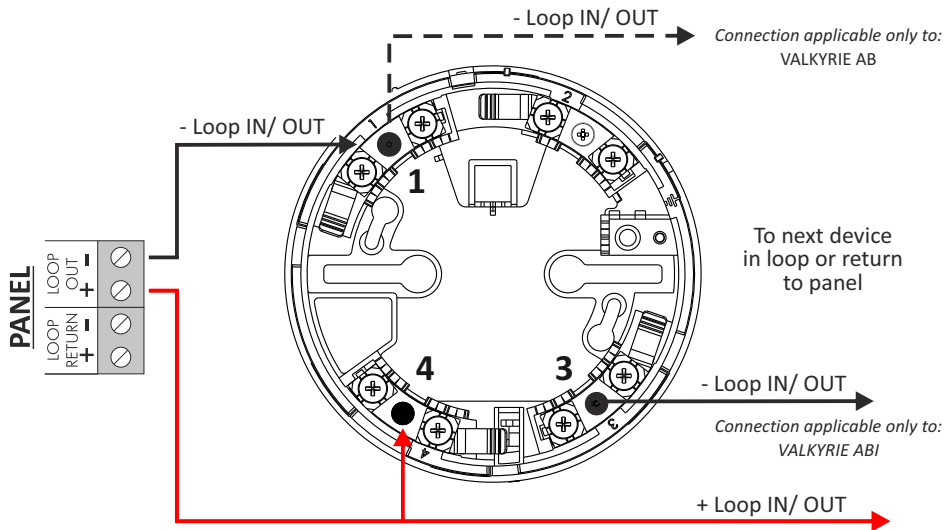
TECHNICAL SPECIFICATIONS

SUPPLY VOLTAGE	Loop Power - 20V to 30V DC
LOOP CURRENT - QUIESCENT	0.5mA
LOOP CURRENT - ALARM BEACON	3mA Max.
MAX. CABLE SIZE	2.5 mm ²
MAX. HUMIDITY	95% RH Non-Condensing
OPERATING TEMPERATURE	-10°C to 55°C
ENCLOSURE MATERIAL	Red / ABS
PROTECTION CATEGORY	IP44
DIMENSIONS	110 (D) x 49.5 (H) mm
WEIGHT	150g included beacon base - 180g inc. packaging

ORDER CODE	DESCRIPTION
VALKYRIE AB	ADDRESSABLE BEACON
VALKYRIE ABI	ADDRESSABLE BEACON WITH ISOLATOR

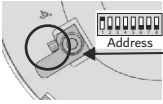
SOUNDER BASE - LOOP CONNECTIONS

Please note that this device is polarised.

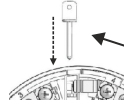


NOTE: Address programmed on switches 1-5 has an OFFSET of 94. For example if D.I.L. switches 1-5 are all set to OFF the actual sounder address, as read by the panel, will be 94.

BASE LOCK

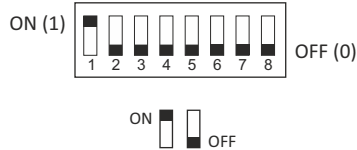


To lock sounder remove pin available at terminal 4 on the underside of the sounder using a small screwdriver.



To unlock sounder from its base push provided unlock key through hole available on the base side wall as shown.

D.I.L. SWITCHES CONFIGURATION



Switches 1-5

Used to configure address in the range 94-125

Switch 6 and 7

Not used

Switch 8

Shadow Beacon

Address Switches

1 ON = 1

2 ON = 2

3 ON = 4

4 ON = 8

5 ON = 16

Sounder Type

Switch No. 8

OFF = Shadow

ON = Normal

SOUNDER/BEACON ADDRESS SETTINGS

Sounder 1	Sounder 2	Sounder 3	Sounder 4	Sounder 5	Sounder 6	Sounder 7	Sounder 8
94	95	96	97	98	99	100	101
Sounder 9	Sounder 10	Sounder 11	Sounder 12	Sounder 13	Sounder 14	Sounder 15	Sounder 16
102	103	104	105	106	107	108	109
Sounder 17	Sounder 18	Sounder 19	Sounder 20	Sounder 21	Sounder 22	Sounder 23	Sounder 24
110	111	112	113	114	115	116	117
Sounder 25	Sounder 26	Sounder 27	Sounder 28	Sounder 29	Sounder 30	Sounder 31	Sounder 32
118	119	120	121	122	123	124	125

NOTE: Address programmed on switches 1-5 has an OFFSET of 94.

For example if D.I.L. switches 1-5 are all set to OFF the actual sounder address, as read by the panel, will be 94.