

# TVP-WM-CM

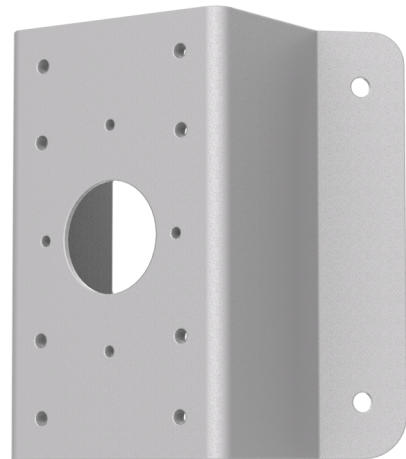
## TruVision PTZ dome corner mount adapter

### Overview

---

The TVP-WM-CM allows for a more efficient installation for corner mount PTZ installations. Such a corner mount installation allows a single PTZ camera to cover a wider field of view compared to a standard wall mount bracket.

The TVP-WM-CM can be combined with the TVP-WMB or GEA-102 TruVision PTZ brackets.



### Details

---

- TruVision PTZ corner mount adapter
- Compatible with TVP-WMB and GEA-102
- Fits 90° corners

# TVP-WM-CM

## TruVision PTZ dome corner mount adapter

### Technical specifications

---

#### General

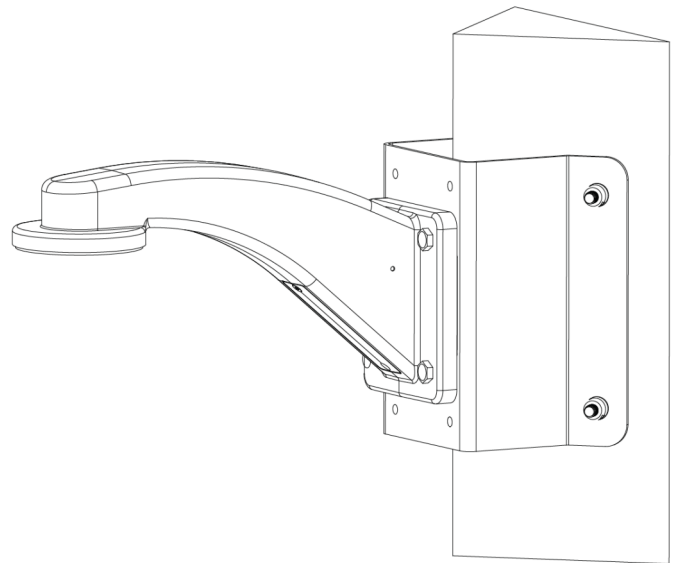
Bracket type	Camera
Support type	PTZ camera, TruVision bracket
Bracket mounting part	Mounting adapter
Mount type	Corner mount
Cable management	No

#### Physical

Physical dimensions	194 × 176 × 109 mm 7.63 × 6.93 × 4.29 in.
Net weight	1548 g 3.41 lbs.

#### Compatible products

Category	Reference	Description
Brackets & Mounts	TVP-WMB	TruVision PTZ dome wall mount bracket



As a company of innovation, Carrier Fire & Security reserves the right to change product specifications without notice. For the latest product specifications, visit [firesecurityproducts.com](https://firesecurityproducts.com) online or contact your sales representative.

Last updated on 2 September 2024 - 10:21