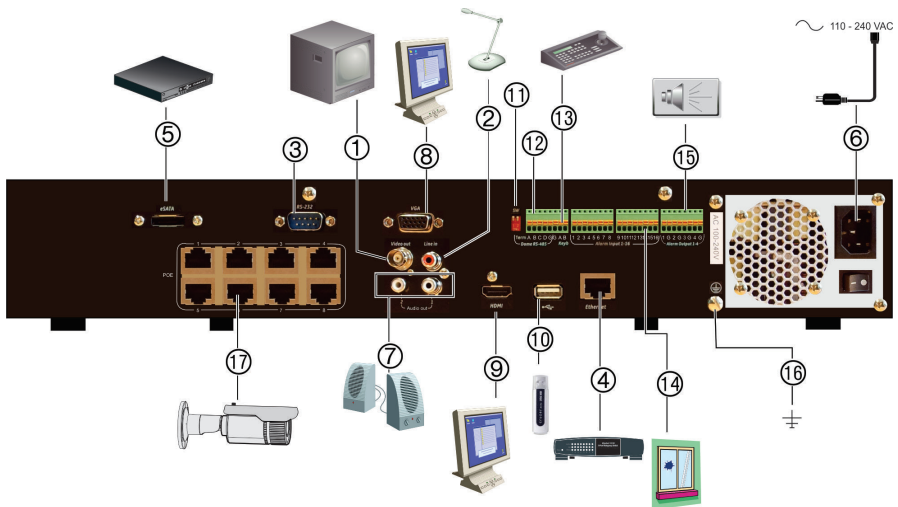


TruVision NVR 21 (S/P) Quick Start Guide

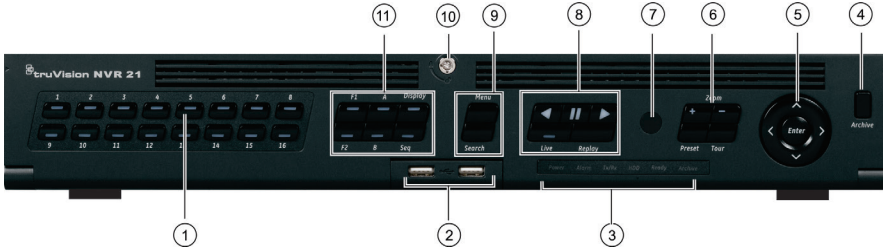
Figure 1: Back panel connections



1. Connect to one CCTV monitors (BNC-type connectors).
2. Connect one audio input to RCA connectors.
3. Connect to a RS-232 device.
4. Connect to a network.
5. Connect to an optional eSATA device such as SATA HDD, CD/DVD-RM.
6. Connect to a power cord.
7. Connect to speakers for audio output.
8. Connect to a VGA monitor.
9. Connect to a HDTV. The HDMI connection supports both digital audio and video.
10. Universal Serial Bus (USB). Connect to an additional device such as a USB mouse, CD/DVD burner or USB HDD.
11. Not used.
12. Not used.
13. Connect to a keyboard (KTD-405 shown)
14. Connect up to 16 alarm inputs-
15. Connect up to four alarm relay outputs.
16. Connect to ground.
17. 8/16 PoE ports

Figure 2: Front panel controls

For detailed information on all the button functions, please refer to the user manual.



Name	Description
1. Channel buttons	Switch between different cameras in live, PTZ control or playback modes. Enter numerals 0 to 9 when using the virtual keyboard.
2. USB Interfaces	Universal Serial Bus (USB) ports for additional devices such as a USB mouse, CD/DVD burner, and USB Hard Disk Drive (HDD).
3. Status LEDs	<p>Power: A flashing green light indicates the recorder is working correctly. Red indicates a fault.</p> <p>Alarm: A steady red light indicates that there is a sensor Alarm In or another alarm such as motion or tampering. A steady green light means there is no alarm.</p> <p>Tx/Rx: Flashing green indicates a normal network connection. No light indicates that the recorder is not connected to any network.</p> <p>HDD: HDD indicator blinks red when data is being read from or written to the HDD. A steady red light indicates an HDD exception or error.</p> <p>Ready: A steady green light indicates the device is functioning properly.</p> <p>Archive: Blinking green indicates archiving is in progress.</p>
4. Archive button	Press once to enter quick archive mode. Press twice to start archiving. Indicator blinks green when data is being written to backup device.
5. Direction	<p>The DIRECTION buttons are used to navigate between different fields and items in menus.</p> <p>In the Playback mode, the left and right buttons are used to speed up and slow down recorded video. The up and down buttons are used to jump recorded video forwards or backwards by 30 s.</p> <p>In Pause mode, the left and right buttons are used to jump recorded video forwards or backwards by one frame. The up and down buttons are used to jump recorded video forwards or backwards by one second.</p> <p>In Live View mode, these buttons can be used to cycle through channels.</p> <p>In PTZ Control mode, it can control the movement of the PTZ camera.</p>
6. PTZ buttons	<p>Zoom: In live view, playback, and PTZ control modes mode, use + and – to zoom in and out. Also used to navigate within menus. See the user manual for more information.</p> <p>Preset: In PTZ control mode, press Preset and a numeric button to call up a preprogrammed preset position.</p> <p>Tour: In PTZ control mode, press Tour and a numeric button to call up preprogrammed shadow tours.</p>




Name	Description
7. IR receiver	Receiver for IR remote control.
8. Playback buttons	<p> Reverse: In live view, play the earliest video file of the current camera; In video playback mode, playback a camera in reverse direction; In picture playback mode, view pictures in reverse direction.</p> <p> Pause: In live view mode, freeze the last image of the live display for all cameras in the selected display mode. In playback mode, stop playing the video.</p> <p> Play: In live view mode, play all-day playback of the current camera (upper left video tile if in multiview mode); In playback mode, play back a camera in the forward direction; In search mode, play back a selected video or view a snapshot; In PTZ mode, do an auto tour. See the user manual for more information.</p> <p>Instantly playback the currently selected file. Default time is 1 minute.</p> <p>Live: Switch to live view mode. Hold for five seconds to lock or unlock the front panel.</p> <p>Replay: In playback mode, start play back at the beginning of the file in the current display mode.</p>
9. Menu and Search buttons	<p>Menu: Enter/exit the main menu.</p> <p>Search: In live view mode, enter the advanced search menu.</p>
10. Front panel lock	You can lock or unlock the front panel with a key.
11. Display buttons	<p>Display: Toggle through the various multiviews: full, quad, 1+5, 1+7, 9, and 16.</p> <p>Seq: Start/stop sequencing cameras on the current monitor.</p> <p>A: In live view mode, select the main monitor.</p> <p>B: In live view mode, select the event monitor.</p> <p>F1: In playback mode, click to start and stop video clipping.</p> <p>F2: In live view, all-day playback and playback modes press to display/hide the time or control bar. In PTZ mode, stop all ongoing operations.</p>

Figure 3: Quick access toolbar



1. **Pause:** Freeze live image of the selected camera.
2. **Start Manual recording:** Start/stop manual recording.
3. **Instant Playback:** Play back the recorded video from the last five minutes.
4. **Audio On:** Enable/disable audio output.
5. **Snapshot:** Capture a snapshot of a video image.
6. **PTZ Control:** Enter PTZ control mode.
7. **Digital Zoom:** Enter digital zoom mode.
8. **Image Settings:** Modify the image lighting levels.
9. **Show Text:** Display inserted text on screen.
10. **Auxiliary Focus:** Automatically focus the camera lens
11. **Lens Initialization:** Initialize the lens of a camera with a motorized lens
12. **Close:** Close the toolbar.

Package contents

The TruVision NVR 21(S/P) (model TVN 21 (S/P)) is shipped with the following items:

- IR (infrared) remote control
- Two AAA batteries for the remote control
- AC power cords (US, Europe, UK)
- USB mouse
- NVR
- CD with software and manuals
- *TruVision NVR 21(S/P) Quick Start Guide*
- *TruVision NVR 21(S/P) User Manual (on CD)*
- *TruVision Recorder Operator Guide (on CD)*

Installation environment

Refer to the user manual for detailed information, but observe these important requirements:

- Place the unit in a secure location.
- Ensure that the unit is in a well-ventilated area.
- Do not expose the unit to rain or moisture.

Quick install

Recommended steps for setting up the recorder:

1. Connect all the devices required to the back panel of the recorder. See Figure 1 on page 1.

Basic connections:

Connect monitor A to the VGA or HDMI output. Connect the mouse to the USB port in the front panel.

Optional connections:

All the other connections shown are optional and depend upon installation requirements.

2. Connect the power supply to the unit and turn on the power.
3. Set up the unit with the required settings using the setup Wizard.

First-time use

The recorder has an express installation wizard that lets you easily configure basic recorder settings when first used. It configures all cameras simultaneously. The configuration can then be customized as required.

By default, the setup wizard will start once the recorder has loaded. The wizard walks you through some of the more important settings of your recorder. Select the preferred language for the system and then enter the administrator password. The default admin password is 1234. It is strongly recommended that this password is changed.

The wizard will then guide you through the menus to set the time and date, network configuration, HDD management, and recording configuration.

When all the required changes have been entered, click **Finish** to exit the wizard. The recorder is now ready to use. Recording starts automatically.



Important: Your TruVision device is delivered with default user name and password credentials for initial access, easy configuration and auto discovery. For security reasons, it is highly recommended to change the default credentials.

Operating the recorder

There are several ways to control the unit:

- Front panel control
- IR remote control
- Mouse control
- TVK-800 keypad
- Web browser control
- Software (TruVision Navigator, TVRmobile or other video management or integration software platforms)

Front panel

The buttons on the front panel control most functions. See Figure 2 on page 3 for the locations of the controls.

IR remote control

The IR remote control buttons are similar to those on the front panel. Place the two AAA batteries in the remote control.

To connect the remote control to the recorder:

1. Press **Menu** on the front panel or right-click the mouse and select **Menu**. The main menu screen appears.
2. Select **Display Mode Settings > Monitor**.
3. Check the recorder's device address value. The default value is 255. The device address is valid for all IR controls.
4. On the remote control press the **Device** button.
5. Enter the device address value. It must be the same as that on the recorder.
6. Press **OK** on the remote control.

USB mouse

The USB mouse provided with the recorder operates all the functions of the recorder, unlike the front panel, which has limited functionality. The mouse lets you navigate and make changes to settings in the user interface.

Connect the mouse to the recorder by plugging the mouse USB connector into the USB port on the back or front panel. The mouse is immediately operational and the pointer should appear.

Web browser control

The recorder's Web browser lets you view, record, and play back videos as well as manage all aspects of the recorder from any PC with Internet access. The browser's easy-to-use controls give you quick access to all recorder functions.

To access the unit, open a web browser and enter the IP address assigned to the recorder as a web address. In the logon screen, enter the default user ID and password:

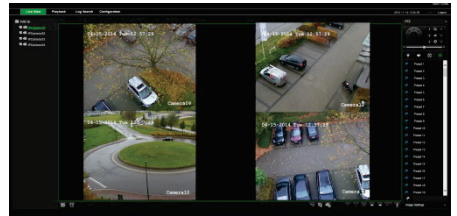
- User ID: admin
- Password: 1234

The default values for recorder network settings are:

- DHCP: Disabled by default.
- IP address - 192.168.1.82
- Subnet mask - 255.255.255.0
- Gateway address - 192.168.1.1
- Server Port: 8000
- HTTP Port: 80
- RTSP port: 554

Note: The following ports need to be forwarded in the router in order to connect properly: Server port and RTSP port.

Figure 4: Web browser interface



Live view mode

Live mode is the normal operating mode of the unit where you watch live pictures from the cameras.

Regularly used functions in live view can be quickly accessed by clicking the left-button of the mouse when its cursor is on the camera image. The shortcut pop-up toolbar appears. See Figure 3 on page 3 for a description of the functions available.

Configuring the recorder

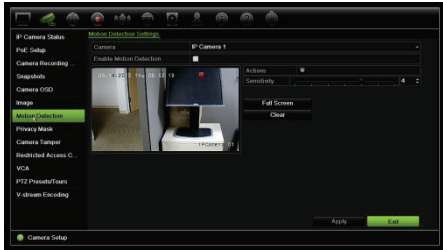
The recorder has an icon-driven menu structure that allows you to configure the unit's parameters. Each command icon displays a screen that lets you edit a group of settings. Most menus are available only to system administrators.

Refer to the recorder user manual for detailed information on configuring the unit.

To access the main menu from live view:

- Press the **Menu** button on the remote control or front panel.
- Or -
- Right-click the mouse and select **Menu** from the pop-up menu.

The main menu screen appears. Move the mouse over a command icon in the menu toolbar and click to select it.



Description of the command icons in the menu toolbar:



Configures display settings.



Configures analog and IP camera settings.



Configures standard network settings.



Configures recording settings.



Configures alarm and event settings such as alarm inputs/outputs, notifications, and intrusion panel/zone setup.



Configures system settings.



Configures storage management.



Configures user settings.



View system information.



Provides reference information to the various toolbars and menus within the interface.



Provides access to logout, reboot and shutdown options.

Specifications

Power supply	100 to 240 VAC, 6.3 A, 50 to 60 Hz
--------------	---------------------------------------

Power consumption (without HDD)	<= 45 W
---------------------------------	---------

Operating temperature	-10 to +55 °C (50 to 131 °F)
-----------------------	---------------------------------

Relative humidity	10 to 90%
-------------------	-----------

Dimensions (W x D x H)	445 × 470 × 90 mm (17.5 × 18.5 × 3.5 in.)
------------------------	--

Weight	≤ 8 kg (≤ 17.6 lb.) (without HDD)
--------	--------------------------------------

Contact information

For contact information, go to www.interlogix.com, or www.utcssecurityproducts

