

ST801

High Temperature Heat Probe (Latched)

General

The ST801 and ST802 thermal probe high temperature heat detectors have been designed to protect from hazards where high temperatures are produced at a specific point. The sensitive element (bulb) can be set at a distance of up to 1 meter from the connection box.

Applications

One of the most common applications for the ST800 is the detection of fires in the extractor cowls of industrial kitchens.

The high reliability of thermal probes make them ideal for controlling automatic fire extinguishing systems such as CO₂, aerosols, etc.

For easy adaptation to any monitoring control panels, two ST800 models are available:

ST801

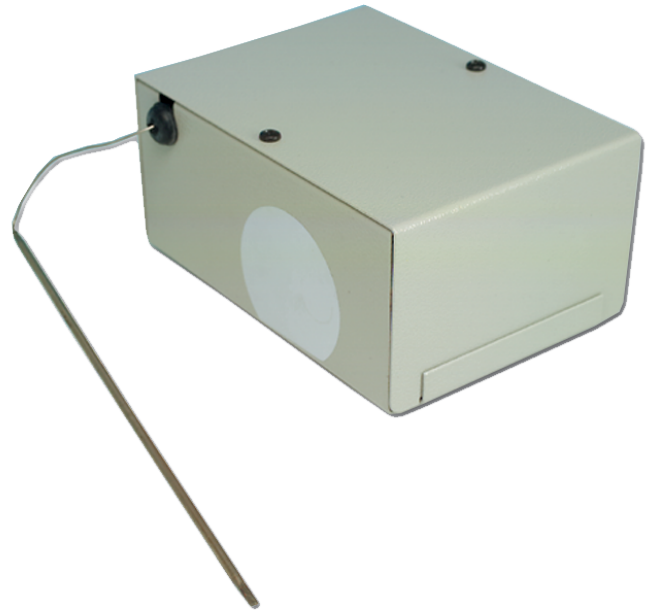
The ST801 is a high temperature thermal probe heat detector with a latching relay that maintains the alarm even after the hazard temperature has fallen or disappeared. It may be used as a conventional detector and connected to any of the zones of the fire control panels from Kilsen.

ST802

The ST802 does not use latching relays. It simply has a potential free relay output allowing for NO, COM and NC connections.

Warning

The ST800 should not be used to protect large areas. The housing of the unit has not been designed to withstand high temperatures.



Details

- Completely metal
- Adjustable from 50 to 300 °C
- Back and side cable input
- Sensitive probe with 1 m of stainless steel capillary piping
- Resistant to heat, grease and humidity
- Easy installation
- Easy connection
- Easy maintenance
- Ideal for commercial areas

ST801

High Temperature Heat Probe (Latched)

Technical specifications

General

Alarm Monitoring	Two wires to conventional zone
------------------	--------------------------------

Electrical

Operating voltage	24 VDC
-------------------	--------

Current consumption	100 mA (Alarm)
---------------------	----------------

Physical

Physical dimensions	140 x 100 x 70 mm
---------------------	-------------------

Net weight	800 g
------------	-------

Colour	Grey (RAL 7032)
--------	-----------------

Probe Dimensions	150 x 3 mm (l x Ø)
------------------	--------------------

Capillary pipe length	1 m
-----------------------	-----

Environmental

Operating temperature	50 to 300°C
-----------------------	-------------

Environment	Indoor
-------------	--------



As a company of innovation, Carrier Fire & Security reserves the right to change product specifications without notice. For the latest product specifications, visit firesecurityproducts.com online or contact your sales representative.

Last updated on 29 April 2024 - 17:11