



# ODYSSEY XL PLUS

## OPERATION MANUAL

---

### GLOBAL FIRE EQUIPMENT S.A.

Parque Industrial Municipal da Barracha, 8150-017 São Brás de Alportel - PORTUGAL | Tel: +351 289 896 560  
Email: info@globalfire-equipment.com | Technical Support: techs@globalfire-equipment.com | www.globalfire-equipment.com

---

## Overview

- General -** Odyssey XL+ is a program designed for monitoring and control of up to 64 Fire Alarm Control Panels. It is constructed using the Toolbook Instructor v11.5 program. Drawings may be entered when the system is set up, and alarm devices placed on these drawings. Therefore in an alarm condition, the exact position of the alarm can be displayed graphically.
- Display -** Odyssey XL+ display adapts automatically to the screen resolution of the computer in use. The minimum screen resolution is 1280X800. The program will adapt automatically to the resolution. At resolutions above 2084X1274 there will be a border around the Odyssey window as that is its maximum resolution.
- New Feature** **IMPORTANT: In contrast to previous versions of Odyssey, user data also adapts to changes in screen resolution.**
- Files -** The program comprises several files. The main program file is 'odysXLPx\_x.exe'. The file containing the user entered setup information and drawings is 'dataXLP.sbk'. A blank version of this file called 'datacopyXLP.sbk' is installed initially, and a new file is created when the system is first run. A backup file is updated each time the program is terminated. A separate backup file is created for each screen resolution used, with a suffix of the horizontal screen size. There is a language translation file called 'languagesXLP.sbk', and two panel facia display files, 'largePanelsXLP.sbk', and 'smallPanelsXLP.sbk'. The correct file is selected automatically, depending on the screen resolution in use.
- Protection -** The program is protected from unauthorised use by a USB program key or 'dongle'. This key must be fitted to the computer for the program to run. Once the program is running, the system can only be configured after a password has been entered. The password can be changed by the engineer if required.
- Computer -** Recommended minimum system requirements are a PC with Windows7™ or above, 100Mb (approx.) hard disk space, 4Gb RAM, 2GHz CPU.

**Installation - IMPORTANT! Install the software before fitting the program key to the computer.** If the software has been supplied as a .zip file, extract all the files to a temporary directory or to the Desktop. Run the installation program 'odysXLPx\_x\_setup.exe', following the default suggestions as far as possible. Leave the box 'Launch Program File' ticked as this will install the program key software. Now fit the program key and allow Windows to find the correct driver. Odyssey XL+ is now ready to use, and can be launched from the icon installed on the Desktop.

**Manual -** This manual describes the operation of the Odyssey XL+ system, and also describes the programming procedure for setting up a new system.

## ***System Operation***

- Startup -** As with any Windows program, Odyssey XL+ can be configured to start up automatically when the computer is switched on. Otherwise the program can be started by double clicking on the desktop icon.
- Normal -** When the program starts it will attempt to communicate with the panels which have been selected. The front screen will be displayed, and the status bar will be green and show the message 'NORMAL'.
- Fire -** If a fire signal is received, the computer will beep, the status bar colour will change to red, and the message displayed will be 'FIRE'. The appropriate building on the site plan will change to red, and an alarm message box will be displayed, showing details of the alarm.
- Acknowledge -** If the 'Acknowledge' button below the status bar is pressed, the beep will stop and if a drawing has been programmed for the detector in alarm, that drawing will be displayed. Initially the zone area will be shown, outlined in red, and if this zone is clicked on, the enlarged zone area showing the individual detectors will be displayed.
- Fault -** A fault signal from a panel will cause the computer to beep, the status bar will turn yellow and display the message 'FAULT'. The appropriate building drawing will turn yellow. If the fault involves a detector or other trigger device, the user can navigate to the graphics pages in the same way as if there was a fire, but system faults will only be displayed in the message box.
- Pre-Alarm -** A pre-alarm signal from a panel will operate in the same way as a fault signal, except that the status bar will show 'PRE-ALARM'. The user will be able to navigate to a graphics drawing if one has been generated for the device in alarm. The total number of alarms of each type will appear on the appropriate boxes on the front page.
- Controls -** The panel in alarm can be silenced, reset or the alarms operated (evacuated) from the graphics screens using the buttons provided. In addition, if the user clicks on the 'Panel List' button, a screen is displayed showing the status of all panels on the system. The panel controls on this page operate ALL panels simultaneously, and should therefore be used with care.
- Panels -** To display a picture of a panel on the system, go to the 'Panel List' page and click on a panel button. The panel can then be controlled and programmed as if the user was actually at the panel, using the on-screen buttons and the computer keyboard.
- Options -** On the Front Page, click on the button labelled 'Options'. A new box will appear, with several buttons. From here, the user can view drawings, view current alarm details, view the Historic Log, view disablements, enter important telephone numbers, and leave messages for other users to view.

# Programming

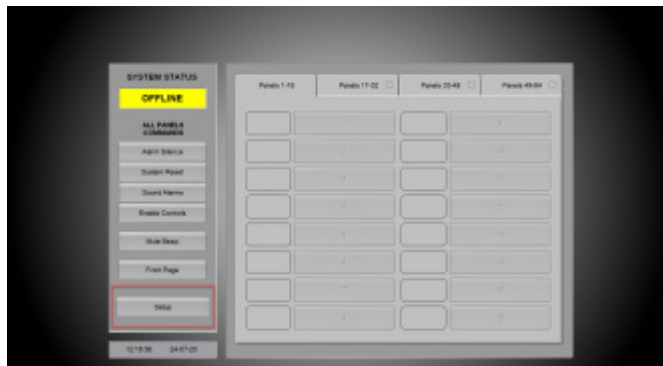
## Password

The system can be configured by an engineer, but is protected from unauthorised alteration by a set entry procedure and a password. The following procedure should be followed to gain entry to the programming features:

1. Navigate to the panel list page using the 'Panel List' button on the front page or graphics pages.



2. Press and hold the 'Ctrl' key and press and release the 'P' key (i.e. Ctrl+P). This will cause a button ('Setup') to appear at the bottom left of the screen. If you do nothing else, the button will disappear after 10 seconds, but can be recalled by pressing 'Ctrl+P' again.



3. Click on the 'Setup' button, and a password dialogue box will appear. You have a further 15 seconds to enter the correct password and click on the 'OK' button or press the 'enter' key. The default password is 'odyssey', but this can and should be changed once the configuration mode has been entered.

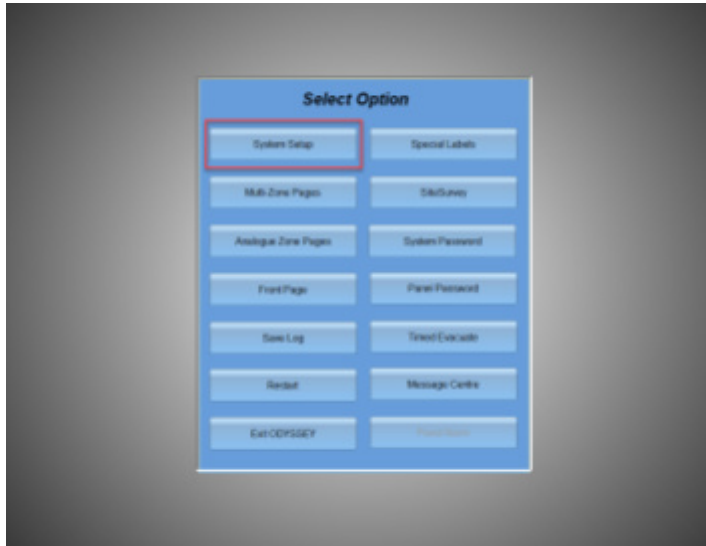
4. If the system is running, a red box will appear explaining that the program will cease to run if you proceed beyond this point. To continue, click on the 'Program' button. You have 15 seconds to perform this action. If the system was not running, this step will be omitted.

## Select Option

If the above procedure is completed successfully, a new box will appear, giving several choices. Each of these will now be described in turn.

First click on the button labelled '**Password**'. From this page the password to enter configuration mode can be changed from the default 'odyssey' password to a unique password.

**IMPORTANT!** A note should be kept in a secure location of the password entered, as you will not be able to enter configuration mode without it.

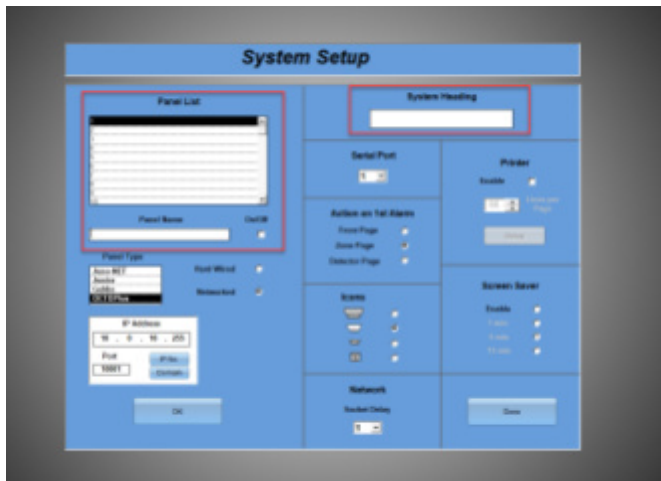


## Setup

The system must first be set up to accommodate the number of panels fitted, and their details entered. Click on the **'Setup'** button, and a new page will be displayed.

First enter a name for the system in the **'System Heading'** box. This will be displayed at the top of each page when the system is in operation.

Then click on a numbered line in the **'Panel List'** box. Enter a name for the panel in the **'Panel Name'** box, and click on the **'On/Off'** box to enable the panel.



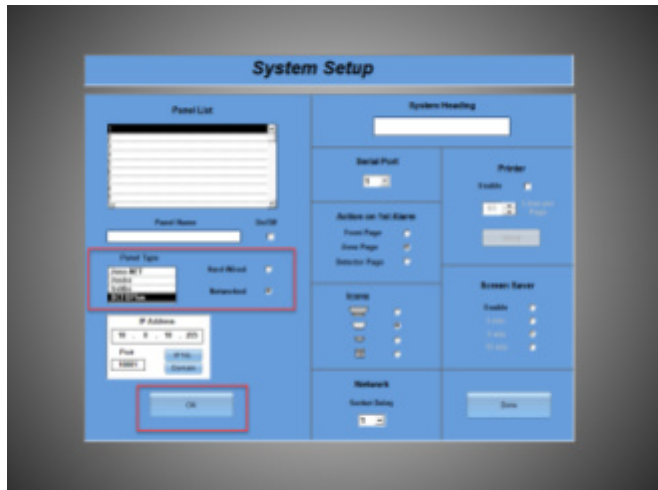
## New Feature

You must select the **Panel Type** for each panel in use. When started, the system will check to see if the correct panel is fitted in each location. Panel parameters are initialised automatically based on this information.

If the panel is connected to the system via the serial port of the computer, either individually with RS232, or as part of a network with RS485, then click on the **'Hard Wired'** button.

If the panel is connected to the system via an ethernet network or Internet, click on the **'Networked'** button. Then enter the dot-separated IP number for ethernet connections, or click on **'Domain'** and enter a valid domain address. Also enter a port number for the panel network interface.

When the selections have been made for that panel, click on the **'OK'** button at the bottom, and select the next panel. **If the 'OK' button is not clicked, the information will not be saved**



When all the panels have been set up, the **Serial Port** can be changed if required. If all panels are connected via an ethernet network or the Internet, the serial port may be selected to **'X'**.

**Action on 1st Alarm** can be selected to stay on the Front Page, to go to the Zone Page, or to go straight to the Detector Page.

The **Network** delay can be set from 1 to 10 seconds. This is the time the system will wait for a reply from a panel on an ethernet network or Internet connection. The delay should be set as low as possible, and the default is 1 second.

A **Printer** can be selected and set up if required. The default is no printer. If a printer is selected, a dot-matrix continuous feed type should be used, such as the **Epson LX-300**. The 'lines per page' can be adjusted to suit the paper size.

A **Screen Saver** can be selected, together with a time delay before its operation.

**IMPORTANT! The standard Windows screen saver and Sleep modes should be disabled**, as these will slow down or stop operation of the system.

When all selections have been made, click on the **'Done'** button to return to the 'Select Option' screen.

## Multi-Zone Pages

When the **'Multi-Zone Pages'** button is clicked, an empty zone page will be displayed. To create a new page, simply press the **'New Page'** button at the top left of the screen. Enter a name for the page and select the panel it is to be linked to.



The background colour of the page can be selected by clicking on the appropriate coloured box. This should be selected to best suit the drawings which will be imported later

Alternatively, if you wish to modify a previously created page, simply click on the **'Existing Page'** button and select the panel then select the page from the list.

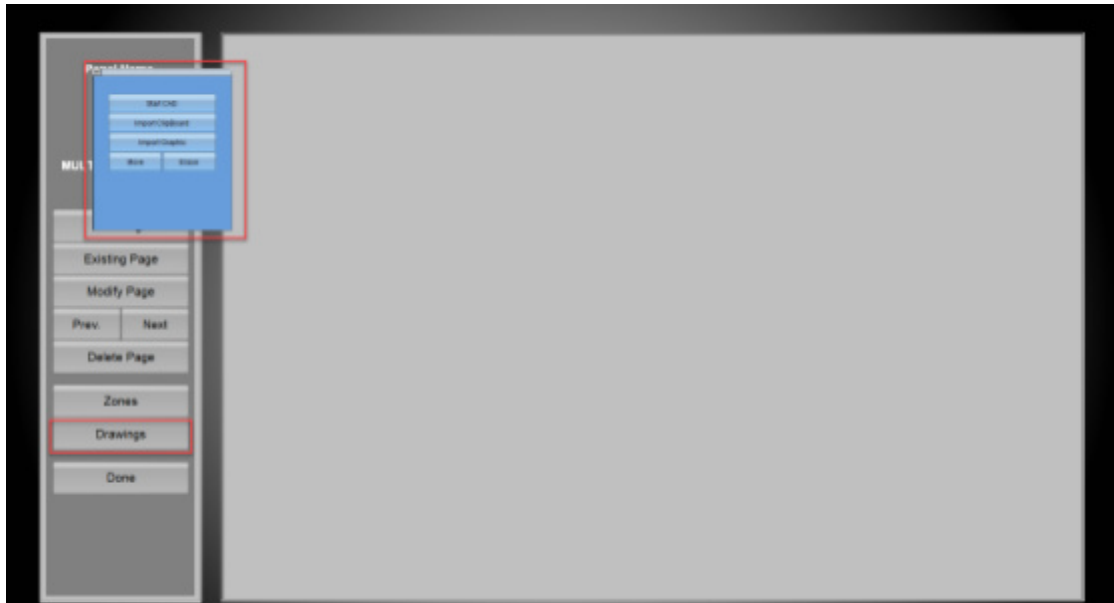
The page name and colour can be changed later by clicking on **'Modify Page'** or the page can be deleted with the **'Delete Page'** button.

## Placing Drawings

The easiest way to place drawings in Odyssey XL+ is to have the drawings ready as graphics files on the computer you are using. You can import files in .bmp, .jpg, .png, or .tif formats.

Click on the **'Drawings'** button near the bottom left of the screen. A tool box will be displayed with various options. Click on the **'Import Graphic'** button and select the file you want to import. You can click and drag the drawing to the desired position on the screen.

To resize the drawing, click on the drawing with the + or – keys pressed. The drawing will then become bigger or smaller.



## Using CAD

Alternatively you can then place a drawing on the page using a previously drawn 'Autocad' drawing. You will need to have a copy of the 'Autocad' or 'Autocad LT' or similar program loaded onto the system you are using, as well as the required drawing files.

Click on **'Start CAD'** and enter the correct filename. Autocad should now start up, and you will automatically change over to Autocad.

The required drawing should now be opened in Autocad, and zoomed to approximately the correct size to fill the Odyssey window. Any necessary modifications to the drawing should be made in Autocad before the drawing is captured and transferred to Odyssey.

To transfer the drawing, in Autocad, select 'Edit' then 'Copy', and click the top left and bottom right boundaries of the part of the drawing required, then press 'enter'. This will save a bitmap image of the drawing to the Windows clipboard. Press 'Alt+Tab' to return to Odyssey, and click on **'Import Clipboard'**. The drawing should now be displayed on the Zone Page. Click and drag to drawing to the correct position. If the result is not as required, click on 'Erase' and start the procedure again. Remember you can move between Autocad and Odyssey by pressing 'Alt+Tab'.

To resize the drawing, click on the drawing with the + or – keys pressed. The drawing will then become bigger or smaller.

When you have finished with Autocad, go to Autocad with the 'Alt + Tab' keys and click on 'file' then 'Exit'. You will then automatically return to Odyssey.

## Placing Zones

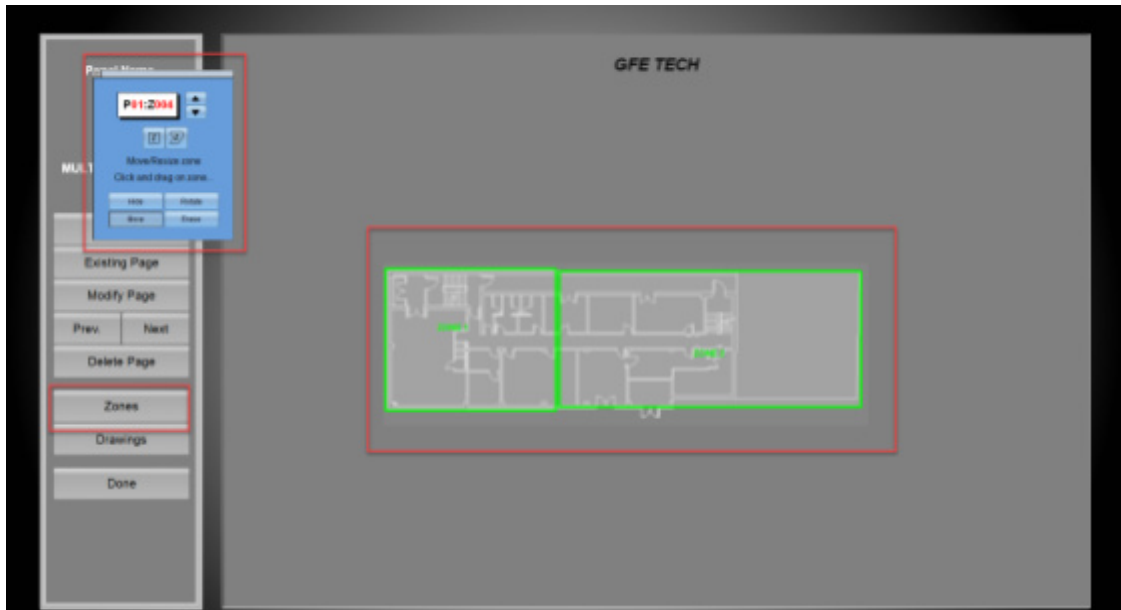
Zones can now be placed on the drawing. Click on the '**Zones**' button near the bottom left of the screen. A new tool box will be displayed. Select the number of the first zone required by clicking on the zone number box and then clicking the up/down arrows. As the zones are placed, the numbers will increment automatically, but this can be overridden if required.

If only **square or rectangular zones** are required, click on the left hand zone symbol and simply click in the approximate position of the zone. Once placed, the zones can then be moved, resized, and erased or simply hidden using the appropriate buttons.

**Hint:** Note that when using the '**Move**' button, if the '**Ctrl**' key is held down, only the zone number will be moved.

If **polygonal zones** are required, click on the right hand zone symbol. Then click on the starting point of the zone shape, and click on each corner of the zone shape.

**Hint:** Hold down the '**Ctrl**' key while clicking, to make the corners square. To complete the last side of the zone, click on the RIGHT mouse button, again using '**Ctrl**' to square this side if required.



**New Feature** The zone number will be placed automatically in the centre of the zone.

Polygonal zones can be moved, resized, erased and hidden in the same way as rectangular zones.

Note that more than one zone of the same number can be placed, but you will be asked if you really want to do this. This feature may be required if a zone is split into two areas.

After placing all the zones, they should be hidden using the 'Hide/Show' button. This will make a less confusing display in an alarm condition.

To return to the original options page, click on the '**Panel List**' button at the lower left of the screen.

Changes to the configuration file are saved automatically. When Odyssey is next exited the file is automatically backed up and compacted.

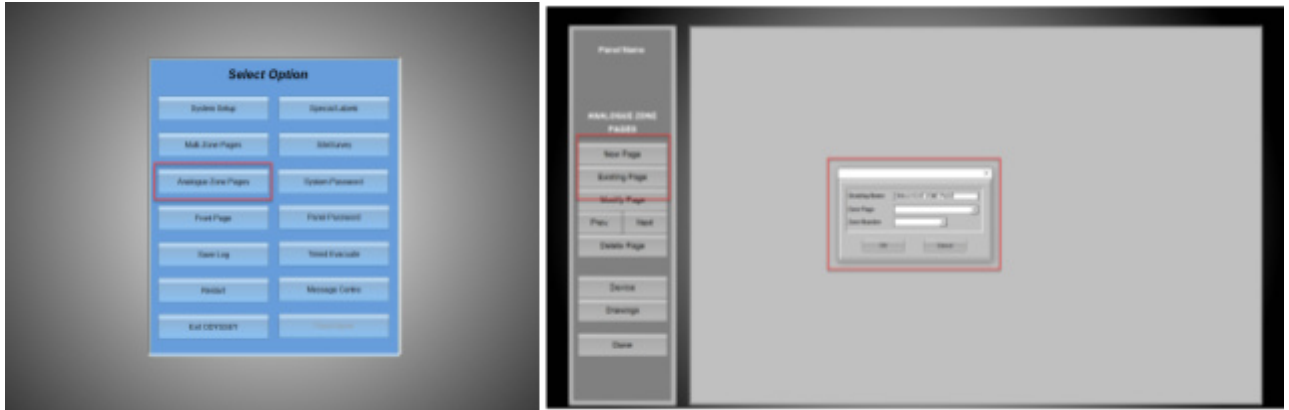
## Analogue Zones

When the '**Analogue Zone Pages**' button is clicked, an empty detector page will be displayed. To create a new page, simply press the '**New Page**' button at the top left of the screen. Enter a name for the page and select the Zone Page and Zone Number it is to be linked to.

Note: The background colour of the page will be the same as the background colour of the Zone page it is linked to.

Alternatively, if you wish to modify a previously created page, simply click on the '**Existing Page**' button and select the zone page and drawing name from the list.

The page name can be changed later by clicking on '**Modify Page**' or the page can be deleted with the '**Delete Page**' button.



## Placing Drawings

As with the Multi-Zone Pages, the easiest way to place drawings is to have the drawings ready as graphics files on the computer you are using. You can import files in .bmp, .jpg, .png, or .tif formats.

Click on the '**Drawings**' button near the bottom left of the screen. A tool box will be displayed with various options. Click on the '**Import Graphic**' button and select the file you want to import. You can click and drag the drawing to the desired position on the screen.

## New Feature

To resize the drawing, click on the drawing with the + or – keys pressed. The drawing will then become bigger or smaller.

## Using CAD

Alternatively you can then place a drawing on the page using a previously drawn 'Autocad' drawing. You will need to have a copy of the 'Autocad' or 'Autocad LT' or similar program loaded onto the system you are using, as well as the required drawing files.

Click on '**Start CAD**' and enter the correct filename. Autocad should now start up, and you will automatically change over to Autocad.

The required drawing should now be opened in Autocad, and zoomed to approximately the correct size to fill the Odyssey window. Any necessary modifications to the drawing should be made in Autocad before the drawing is captured and transferred to Odyssey.

To transfer the drawing, in Autocad, select 'Edit' then 'Copy', and click the top left and bottom right boundaries of the part of the drawing required, then press 'enter'. This will save a bitmap image of the drawing to the Windows clipboard. Press 'Alt+Tab' to return to Odyssey, and click on '**Import Clipboard**'. The drawing should now be displayed on the Zone Page. Click and drag to drawing to the correct position. If the result is not as required, click on 'Erase' and start the procedure again. Remember you can move between Autocad and Odyssey by pressing 'Alt+Tab'.



To resize the drawing, click on the drawing with the + or – keys pressed. The drawing will then become bigger or smaller.

When you have finished with Autocad, go to Autocad with the 'Alt + Tab' keys and click on 'file' then 'Exit'. You will then automatically return to Odyssey.

- Lines** The outline of the zone can now be drawn. Click on the **'Line'** button in the tool box, and then click on each corner of the zone. **Hint:** Hold the **'Ctrl'** key down to make corners square. Click the **RIGHT** mouse button to finish.
- Text** Descriptive text can be placed on the drawing if required, by clicking on the **'Text'** button in the tool box, and entering the required text. Then click at the position of the text.
- Move** To move the drawing or text, click on the **'Move'** button to select it, then click and drag the drawing or text to the new position.
- Erase** To erase the drawing or text, click on the **'Erase'** button to select it, then click the drawing or text to erase it.
- Devices** To place detectors, call points etc., click on the **'Device'** button near the bottom left of the page. A new tool box will appear. Select the loop and number of the first device to be placed by clicking on the number box and then clicking the up/down arrows. As the devices are placed, the numbers will increment automatically, but this can be overridden if required.



Click on the required type of device in the tool box, then click on the position of the device on the drawing. Devices can be moved or erased using the appropriate buttons in the toolbox.

- New Feature** Device icon sizes are decided globally from the Setup page, but individual icons can be resized by selecting the **'Icon'** option and clicking on the icon. Hold 'ctrl' down while clicking, and all icons on the page will resize.

Click on the **'List'** button to show a list of all devices on the page.

To return to the original options page, click on the **'Panel List'** button at the Lower left of the screen.

Changes to the configuration file are saved automatically. When Odyssey is next exited the file is automatically backed up and compacted.

- Front Page** When the **'Front Page'** button is clicked, the Front Page will be displayed to allow drawings to be placed and linked to Multi-Zone Pages and panels. A dialogue box will appear which will allow the import of drawings onto the central display area. An overall site drawing can be imported, for

example, and each part of that drawing can be made 'active' and linked to other drawings or panels.



### Placing Drawings

As with the Multi-Zone and Analogue Zone Pages, the easiest way to place drawings is to have the drawings ready as graphics files on the computer you are using. You can import files in .bmp, .jpg, .png, or .tif formats.

Click on the '**Import Graphic**' button in the dialogue box and select the file you want to import. You can click and drag the drawing to the desired position on the screen.

### New Feature

To resize the drawing, click on the drawing with the + or – keys pressed. The drawing will then become bigger or smaller.

### Using CAD

Alternatively you can then place a drawing on the page using a previously drawn 'Autocad' drawing. You will need to have a copy of the 'Autocad' or 'Autocad LT' or similar program loaded onto the system you are using, as well as the required drawing files.

Click on '**Start CAD**' and enter the correct filename. Autocad should now start up, and you will automatically change over to Autocad.

The required drawing should now be opened in Autocad, and zoomed to approximately the correct size to fill the Odyssey window. Any necessary modifications to the drawing should be made in Autocad before the drawing is captured and transferred to Odyssey.

To transfer the drawing, in Autocad, select 'Edit' then 'Copy', and click the top left and bottom right boundaries of the part of the drawing required, then press 'enter'. This will save a bitmap image of the drawing to the Windows clipboard. Press 'Alt+Tab' to return to Odyssey, and click on '**Import Clipboard**'. The drawing should now be displayed on the Zone Page. Click and drag to drawing to the correct position. If the result is not as required, click on 'Erase' and start the procedure again. Remember you can move between Autocad and Odyssey by pressing 'Alt+Tab'.

To resize the drawing, click on the drawing with the + or – keys pressed. The drawing will then become bigger or smaller.

When you have finished with Autocad, go to Autocad with the 'Alt + Tab' keys and click on 'file' then 'Exit'. You will then automatically return to Odyssey.

### Link

Now click on the 'Link' button at the bottom right of the screen. A new dialogue box will be displayed.



**Draw** A transparent overlay must be placed over each drawing in order to make it 'active'. The easiest way to do this is to click on the drawing while holding the '**Ctrl**' key. The transparent shape will be placed over the drawing, following its outline automatically.

Alternatively, an overlay can be drawn manually. You can place a shape over a drawing, following as closely as possible the outline of the drawing. Click on '**Draw**' in the dialogue box, then click on the starting point of the shape, and click on each corner of the shape.

**Hint:** Hold down the '**Ctrl**' key while clicking, to make the corners square. To complete the last side of the zone, click on the RIGHT mouse button, using '**Ctrl**' to square this side if required.

**Text** Descriptive text can be placed on the drawing if required, by clicking on the '**Text**' button in the dialogue box, and entering the required text. Then click at the position of the text.

To change the colour of the text, position the mouse on the required text, and RIGHT click while holding down the 'W' key for white, 'R' key for red, 'Y' key for yellow, 'U' key for blue, 'G' key for green, or 'B' key for black. **Note:** White and Black options are disabled for white and black backgrounds respectively.

Text and shapes can be moved or erased by clicking on the appropriate buttons and then pointing at the required item and clicking or dragging.

**Linking** Now you must decide if the drawings you have placed will be linked to Panels or to Multi-Zone Drawings. If you have, say, a panel in a multi-storey building, you could place a drawing representing each floor, and link these to the floor drawings showing the zones. You could also place a block representing the control panel.

Alternatively if you have a multi-building site with several panels, you would probably place drawings for each building and link these to the appropriate panel.

**Link Drawing** To link to a Multi-Zone Drawing, click on the button marked '**Link to Zone Page**'. You will then be asked to choose a drawing to link. Click on the required drawing, and note that it turns red. You will then be given a selection of drawings to choose from. If you have not placed any zone drawings yet, you must go and do this first. Choose a drawing, and after confirmation of your choice, the red drawing will return to its normal colour, and the link will be made automatically.

**Link Panel** To link to a control panel, click on '**Link to Panel**'. You will be asked to choose a drawing to link. Click on the required drawing, and note that it turns red. You will then be given a selection of panels to choose from.

Choose a panel, and after confirmation of your choice, the red drawing will return to its normal colour, and the link will be made automatically. To return to the original options page, click on the **'Done'** button at the lower left of the screen.

Changes to the configuration file are saved automatically. When Odyssey is next exited the file is automatically backed up and compacted.

**Special Labels**

Odyssey is automatically configured to start up in the correct language for each country in which it is operated. However some button labels or messages may not be translated, so the **'Special Labels'** function is included for the user to enter their own translation of a specific label or message. Simply search for the text on the left hand table, and enter the required text in the right hand table. Click on **'Done'**, and the new text will be saved and will be used each time the system starts up.



**Special Symbols**

An alternative set of icons for smoke detectors, call points, etc. is also available if required. This can be selected by clicking on the **'Special Device Symbol'** button.

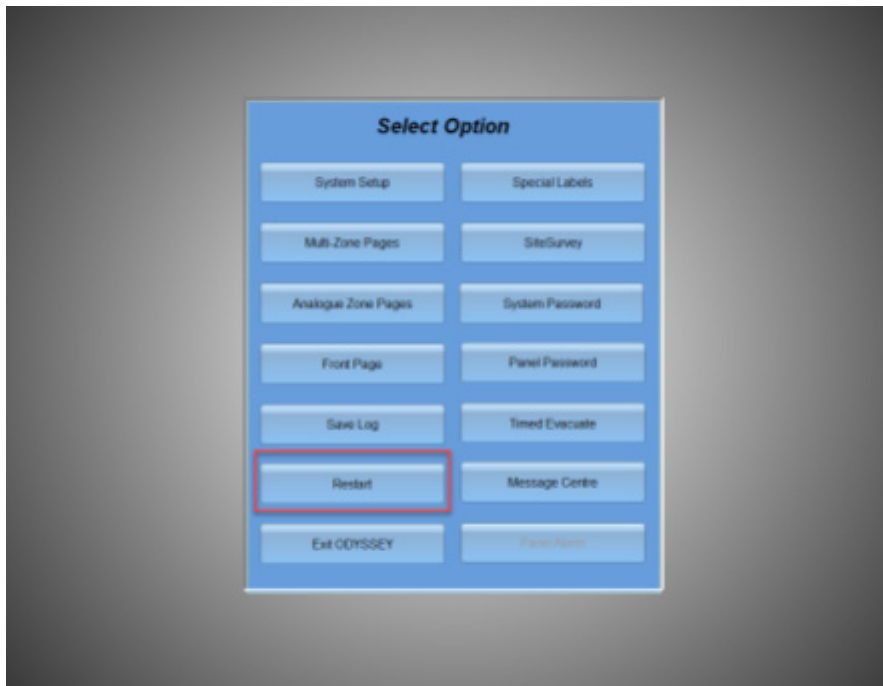
**Save Log**

Odyssey creates a Historic Log of each event which occurs on the system. When the log is full, a 'Log Full' message will be displayed on the screen. This log can be saved to a floppy disk by using the **'Save Log'** function. This will empty the log file and the 'Log Full' message will disappear automatically.



**Restart**

To return to normal operation, press **'Restart'**. This will automatically save any changes you have made.



**Exit ODYSSEY**

To exit from Odyssey, click on 'Exit Odyssey'. You will be asked for a password before being allowed to exit. This password is 'exit' and cannot be changed. Changes will automatically be saved before exit.



***Additional Features***

Please see the 'readmeXLP.pdf' file for additional features not covered in this manual.

## 2. CHAMELEON ODYSSEY CONFIGURATIONS

The ODYSSEY Serial communication must be configured for ODYSSEY. Use the 8.5.6 BMS Menu on the Panel to select the panel address “ADD” and ODYSSEY protocol, these settings are required.

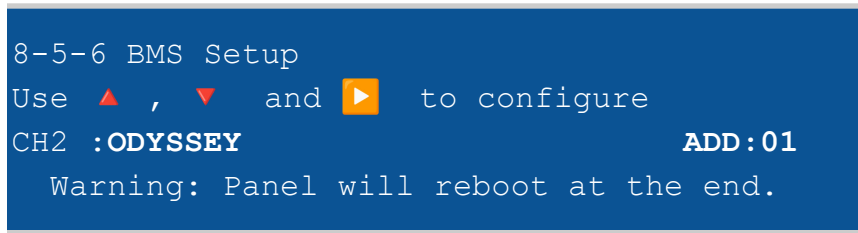


Fig. 1 - BMS Menu

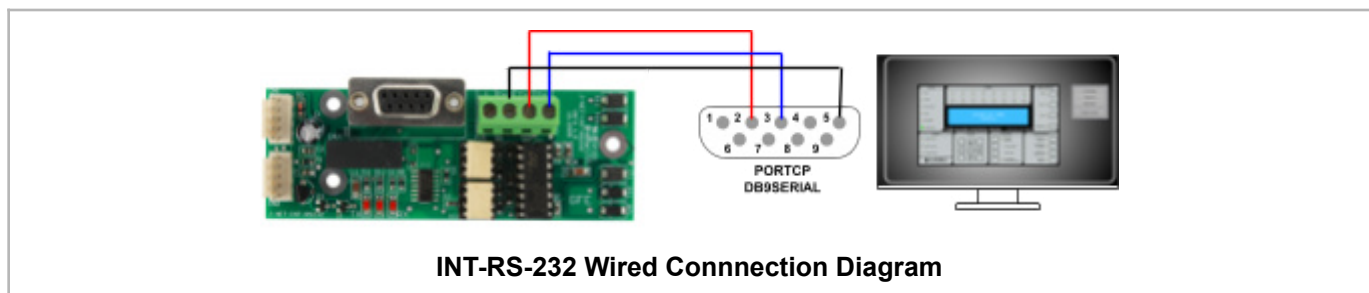
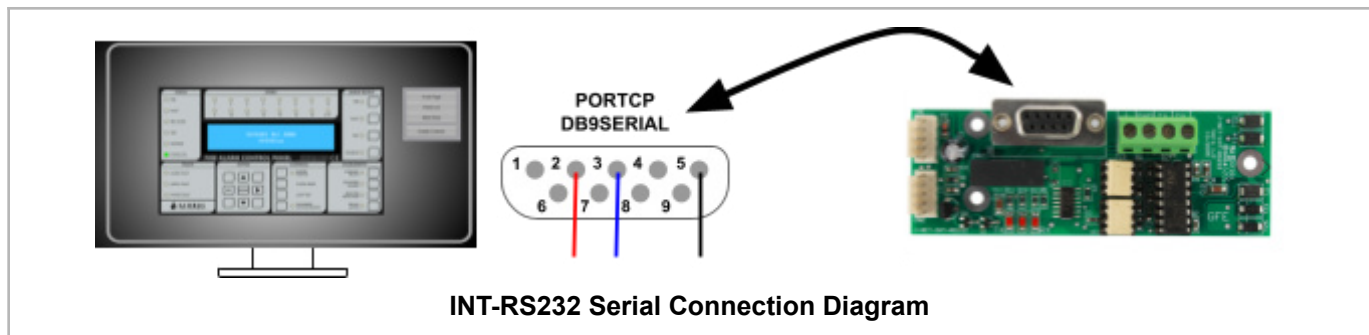
### 2.1 Available Hardware Interfaces

There are different types of interfacing technologies available, namely for Single systems and Multiple systems:

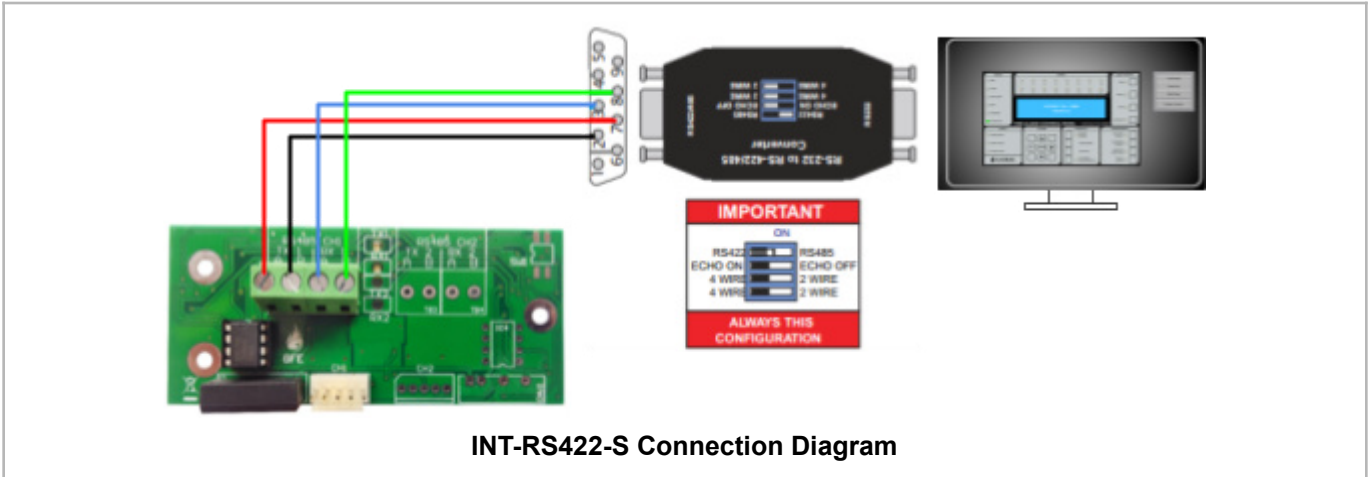
SINGLE SYSTEMS	MULTIPLE SYSTEMS
INT-RS232	INT-RS485-DTL
INT-RS422-S	INT-FO-DTL
INT-FO-S	INT-TCP IP-P2P ( <i>in dev.</i> ) (or J-NET-TCP IP for Modbus)
INT TCPIP ODY / GFE-TCP-ODY	INT TCPIP ODY / GFE-TCP-ODY
INT-TCP IP-P2P ( <i>in dev.</i> )	---

### 2.2 CHAMELEON INTERFACES SINGLE SYSTEMS DIAGRAMS

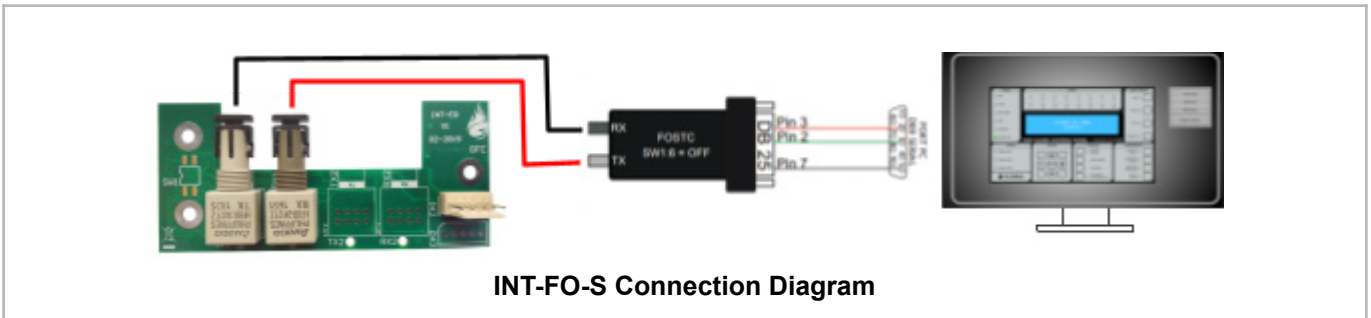
#### 2.2.1 Connecting Chameleon panels through ODYSSEY using INT-RS-232 protocol



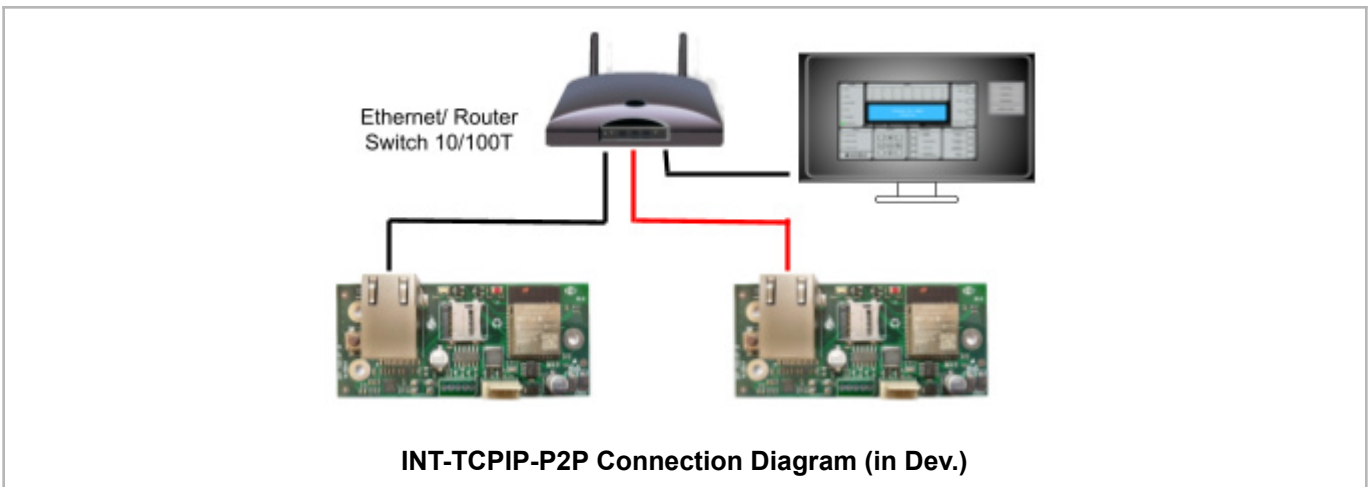
## 2.2.2 Connecting Chameleon panels though ODYSSEY using RS-422

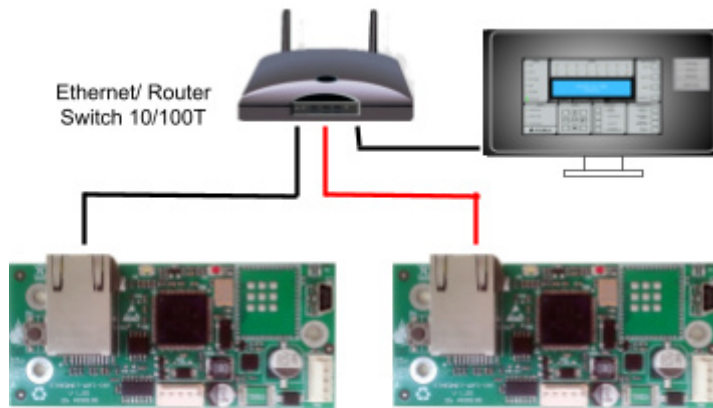


## 2.2.3 Connecting Chameleon panels through ODYSSEY using Fiber Optics



## 2.2.4 Connecting Chameleon panels through ODYSSEY using TCP/IP

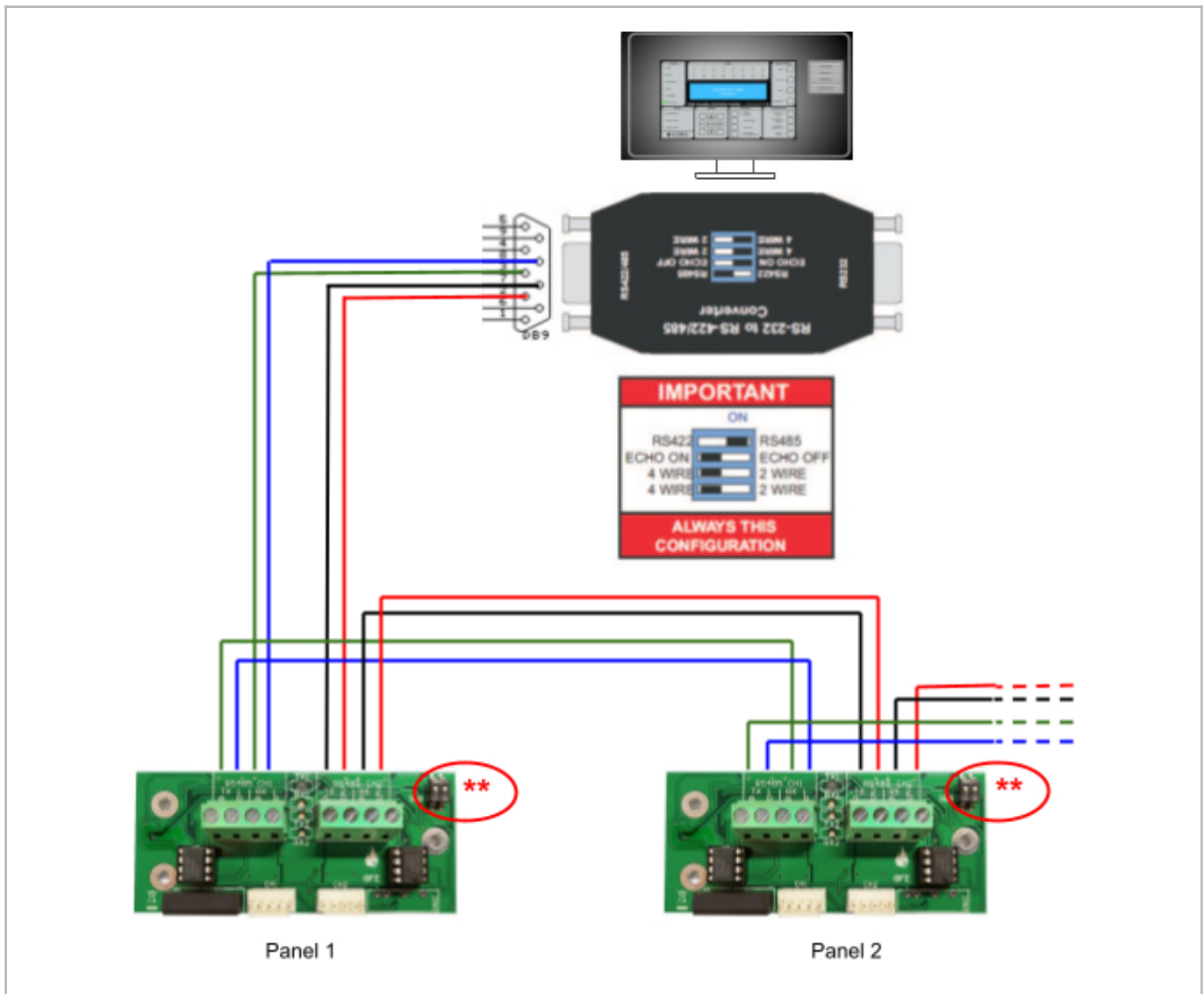




INT TCPIP ODY / GFE-TCP-ODY Connection Diagram

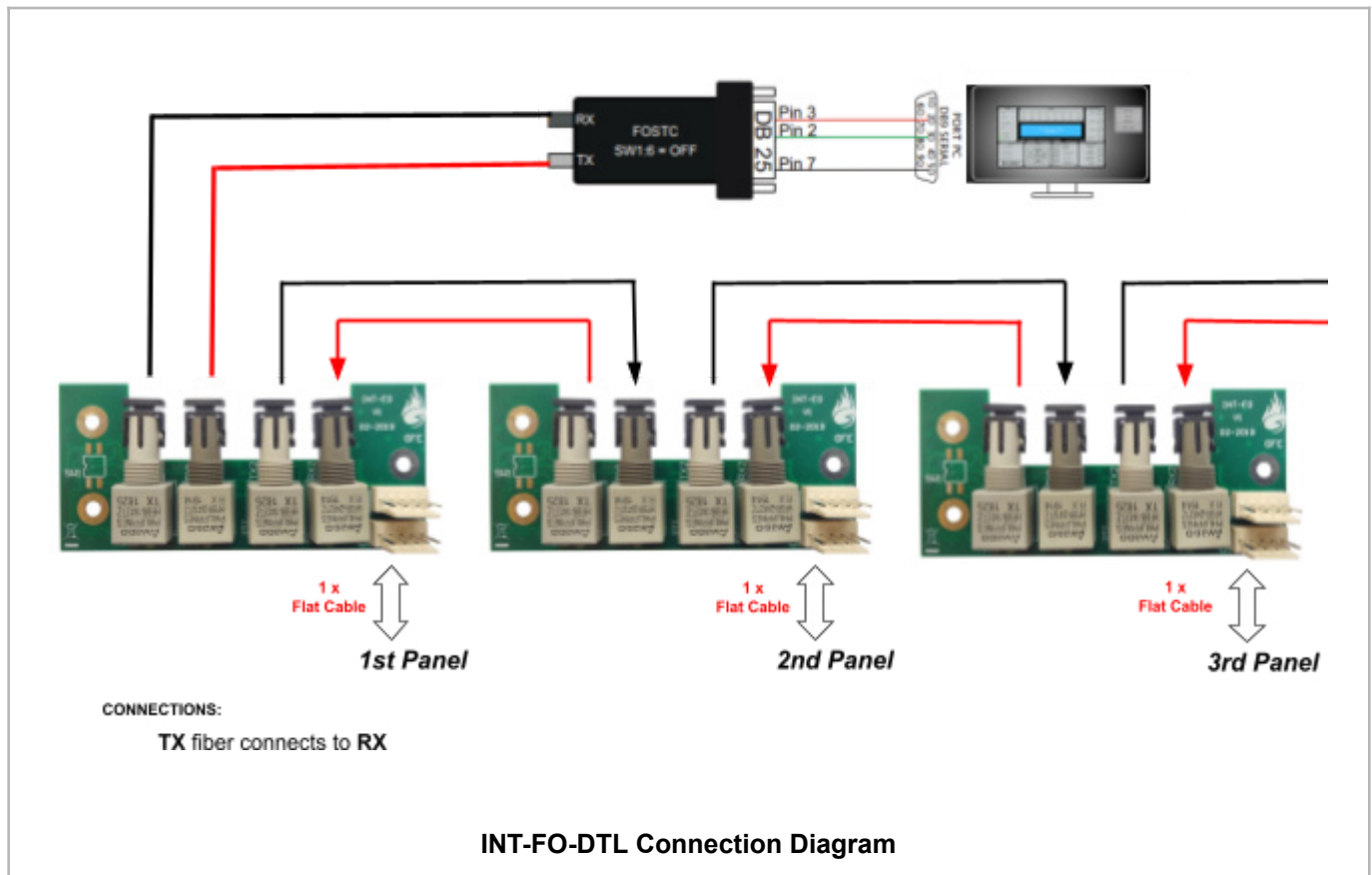
### 3.0 CHAMELEON INTERFACES MULTIPLE SYSTEMS DIAGRAMS

#### 3.1 Connecting Multiple systems through ODYSSEY using RS485





### 3.2 Connecting Multiple systems through ODYSSEY using Fibre Optics



**GLOBAL FIRE EQUIPMENT S.A.**

Parque Industrial Municipal da Barracha, 8150-017 São Brás de Alportel - PORTUGAL | Tel: +351 289 896 560  
Email: info@globalfire-equipment.com | Technical Support: techs@globalfire-equipment.com | www.globalfire-equipment.com