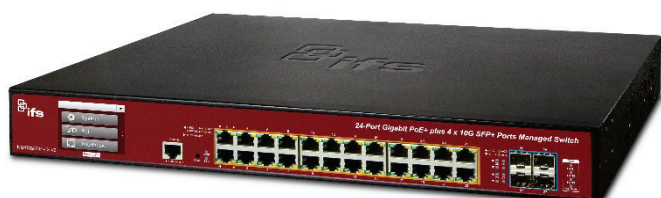


NS4702-24P-4X-V2 Quick Installation Guide

Figure 1: NS4702-24P-4X-V2 L2+ Gigabit PoE Managed Switch with LCD



Package contents

Thank you for purchasing the NS4702-24P-4X-V2 IFS L2+ 24-port Gigabit PoE +4-Port 10G SFP+ Managed Switch with LCD. The descriptions of this model are as follows:

- L2+ 24-port 802.3af/at
- + 4-Port 10G SFP+ Managed Switch with LCD

Unless specified, the term “managed switch” mentioned in this quick installation guide refers to the NS4702-24P-4X-V2.

Open the box of the managed switch and carefully unpack it. The box should contain the following items:

- The managed switch × 1
- Quick installation guide × 1
- RJ45 to RS232 cable × 1
- Rubber feet × 4
- Two rack-mounting brackets with attachment screws × 1
- Power cord × 1
- SFP dust-proof cap × 4

If any of these are missing or damaged, contact your dealer immediately. If possible, retain the carton including the original packing materials for repacking the product in case there is a need to return it to us for repair.

Requirements

The managed switch provides a remote login interface for management purposes. The following equipment is necessary for further management:

- Workstations running Windows® 10 / 7 / 8 / 2008 / Vista / 2003 / XP, MAC OS X or later, Linux, UNIX, or other platforms are compatible with TCP/IP protocols.
- Workstations are installed with Ethernet NIC (Network Interface Card)
- **Serial port connection (Terminal)**

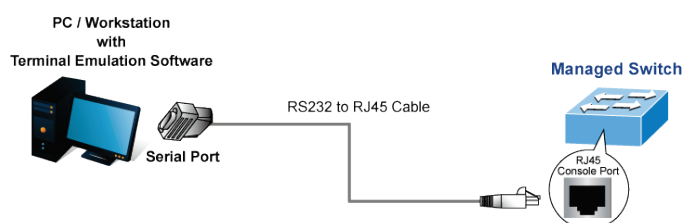
- The above workstations come with a COM Port (DB9) or USB-to-RS232 converter.
- The above workstations have been installed with a terminal emulator, such as Hyper Terminal included in Windows XP/2003.
- **Serial cable** – One end is attached to the RS232 serial port, and the other end is attached to the console port of the managed switch.
- **Ethernet port connection**
 - Network cables – Use standard network (UTP) cables with RJ45 connectors.
 - The above workstations have a Web browser and JAVA runtime environment plug-in installed.

Note: We recommend using Internet Explorer 11.0 or later to access the managed switch. If the web interface of the managed switch is not accessible, turn off the anti-virus software or firewall and then try it again.

Terminal setup

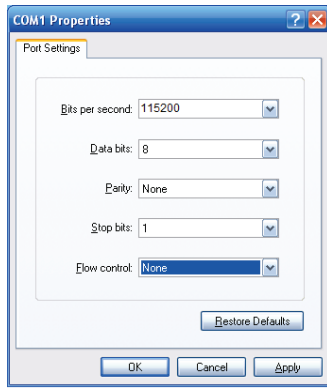
To configure the system, connect a serial cable to a COM port on a PC or notebook computer and to a RJ45 type serial port on the managed switch.

Figure 2: Console connectivity



A terminal program is required to make the software connected to the managed switch. Windows' Hyper Terminal program may be a good choice. The Hyper Terminal can be accessed from the **Start** menu.

1. Run the terminal program on the OS.
2. When the following screen appears, ensure that the COM port is configured as shown below. Click **OK** when finished with configuration.

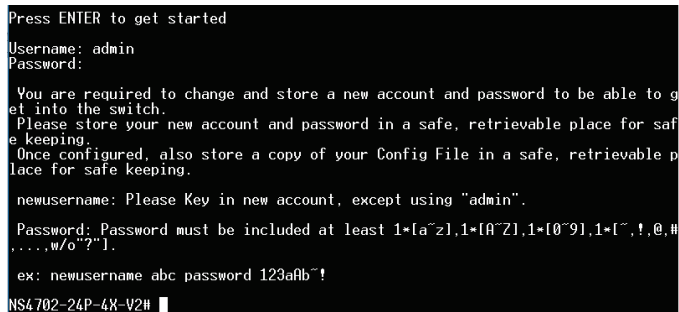


- Log in to the console. After the terminal has been connected to the device, power on the managed switch. The terminal displays “running testing procedures”.

When the following dialog box in Figure 3 below appears, type the factory default user name “admin” and password “admin”.

User name: **admin**
Password: **admin**

Figure 3: Console login screen



After logging on to the console with the default user name and password, both the user name and password must be changed. A user can only use the newusername command to change the user name and password.

After changing the user name and password successfully, the user must log on again with the new user name and password.

Note: Only commands in lowercase letters are accepted in the console interface.

Configuring the IP address

The managed switch is shipped with the default IP address shown below:

IP Address: **192.168.0.100**
Subnet Mask: **255.255.255.0**

Note: Before connecting to a TruVision Navigator video surveillance system network, the default IP address must be changed to the IP address assigned for TruNav by the network administrator.

To check the current IP address or modify a new IP address for the managed switch, use the following procedures:

Display of the current IP Address

- At the “#” prompt, type “show ip interface brief”.
- The screen displays the current IP address.

Figure 4: IP information screen

Interface	Address	Method	Status
VLAN 1	192.168.0.100/24	Manual	UP

Configuration of the IP address

- At the “#” prompt, type the following command and press Enter as shown in Figure 5.

```
Switch# configure terminal
Switch(config)# interface vlan 1
Switch(config-if-vlan)# ip address 192.168.1.100
255.255.255.0
```

The previous command would apply the following settings for the managed switch.

IP Address: 192.168.1.100

Subnet Mask: 255.255.255.0

Figure 5: Configuring the IP address screen

```
Switch#
Switch# configure terminal
Switch(config)# interface vlan 1
Switch(config-if-vlan)# ip address 192.168.1.100 255.255.255.0
Switch(config-if-vlan)#
```

- Repeat step 1 to check if the IP address has changed.

Store the current switch configuration

- At the “#” prompt, type the following command and press Enter.

```
# copy running-config startup-config
```

Figure 6: Saving current configuration command screen

```
Switch#
Switch# copy running-config startup-config
Building configuration...
% Saving 3666 bytes to flash:startup-config
Switch#
```

If the IP is successfully configured, the managed switch applies the new IP address setting immediately. Access the web interface of the managed switch through the new IP address.

Note: If unfamiliar with the console command or the related parameter, type “help” in the console to obtain the Help description.

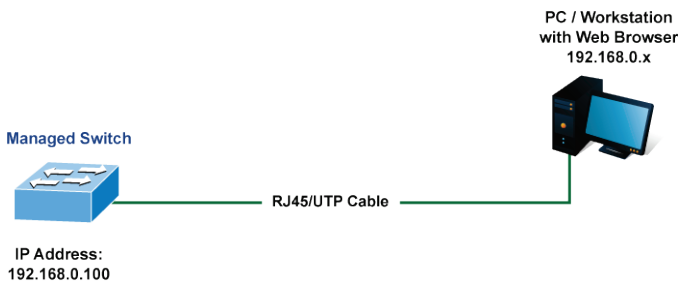
Starting web management

The section describes how to start up the web management function for the managed switch. Note that the managed switch is configured through an Ethernet connection. Ensure that the manager computer is set to the same IP subnet address.

For example, if the default IP address of the managed switch is 192.168.0.100, then the manager computer should be set to

192.168.0.x (where x is a number between 1 and 254, except 100), and the default subnet mask is 255.255.255.0.

Figure 7: IP management diagram



Logging in to the managed switch

1. Use the Internet Explorer 8.0 or later Web browser and type the IP address `http://192.168.0.100` (the factory-default IP address) to access the Web interface.
2. When the following dialog box appears, enter the default user name “admin” and password “admin” (or the password you have changed before) as shown in Figure 8 below.

Default IP Address: **192.168.0.100**
 Default User Name: **admin**
 Default Password: **admin**

Note: Before connecting to a TruVision Navigator video surveillance system network, the default IP address must be changed to the IP address assigned for TruNav by the network administrator.

Figure 8: Login screen

Authentication required
 http://192.168.0.100
 Your connection to this site is not private

Username

Password

Log in Cancel

3. If logged in to the switch via web or console with the default account (admin / admin), a warning message appears to notify the user to change the user name and password. Click OK.
4. Type a new user name and password in the Edit User page, following the guidelines as shown. Click **Apply**.

Edit User

User Settings

User Name *	User1	
Password *	*****	<input type="checkbox"/> show password
Password (again) *	*****	
Privilege Level	15	

Apply Reset

Please key in new account, except using "admin"
 Password must be included at least 1*[a-z], 1*[A-Z], 1*[0-9], 1*[-, !, @, #, ..., w/o ""]

5. After typing the password, the main screen appears as shown in Figure 9 below.

Figure 9: Main web interface screen



6. The switch menu on the left side of the web page permits access to all the functions and status provided by the managed switch.

Figure 10: Main menu

- System
- DHCP Server
- UDLD
- OSPF
- SNMP
- Port Management
- Link OAM
- Link Aggregation
- VLANs
- Spanning Tree
- Multicast
- QoS
- Access Control List
- Authentication
- Security
- MAC Address Table
- LLDP
- Diagnostics
- Loop Protection
- RMON
- Ring
- PoE
- Port Identification
- LCD

Refer to the User Manual or click the **Help** button for further information about using the web management interface.

Note: For security purposes, change and memorize the new password after this first setup.

Saving the configuration

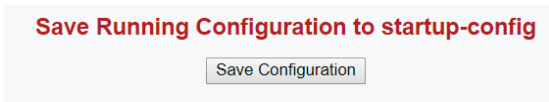
The running configuration file is stored in the RAM of the managed switch. In the current version, the running configuration sequence of running-config can be saved from the RAM to FLASH by executing the Save Startup Config command. After doing this, the running configuration sequence becomes the startup configuration file (i.e., the saved configuration).

To save all applied changes and set the current configuration as a startup configuration, the startup-configuration file is loaded automatically across a system reboot.

1. Click **System > Save Startup Config**.



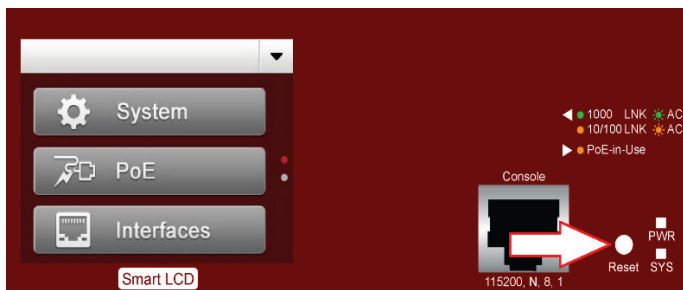
2. Click the **Save Configuration** button.



Resetting the switch to default

To reset the IP address to the default IP address “192.168.0.100” and the user password to factory default mode (default password is “admin”), press the hardware reset button on the front panel for about 10 seconds. After the device is rebooted, log in to the management Web interface within the same subnet of 192.168.0.xx and default password. Note that all the previous setups are erased after the factory default reset.

Figure 11: Reset button



LCD touch screen

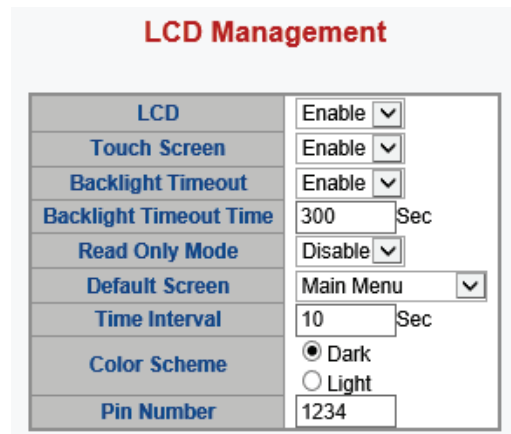
The managed switch has a 2.4-inch color LCD touch screen with management functions. Tap the LCD touch screen to wake the LCD touch interface.

Figure 12: LCD touch screen



Default LCD: **Enable**
 Default Touch Screen: **Enable**
 Default Backlight Timeout: **Enable**
 Default Backlight Timeout Time: **300**
 Default Read Only Mode: **Disable**
 Default Screen: **Main Menu**
 Default Time Interval: **10**
 Default Color Scheme: **Dark**
 Default PIN Number: **1234**

Click **LCD** in the main menu of the the web interface (see Figure 10 on page 3) to bring up the LCD Management page. LCD functionality can be configured on this page.



Refer to the User Manual or click the **Help** button for further information about using LCD management and the web management interface.

Compliance



Contact information

Europe, Middle East, and Africa

W <https://firesecurityproducts.com>

Australia

W <https://firesecurityproducts.com.au/>