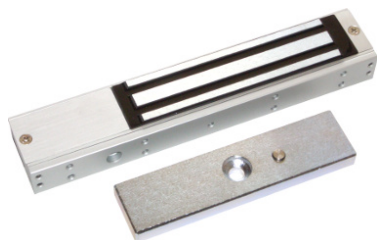
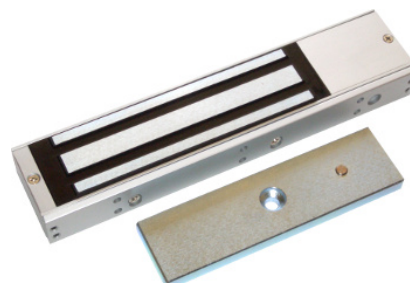


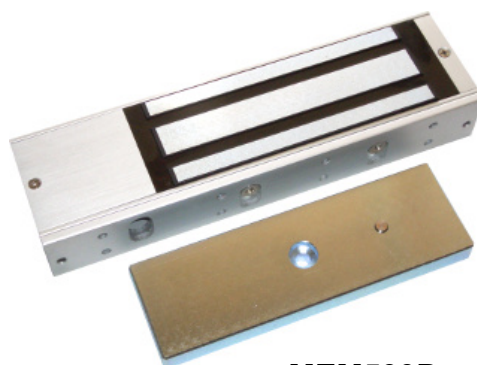
Electromagnetos Bloqueadores de Porta



MEM180D



MEM300D



MEM500D

Modelo	MEM180D	MEM300D	MEM500D
Força	180Kg	300Kg	500Kg
Tensão trabalho	12 / 24 VDC comutável		
Led (estado de porta)	Sim		
Relé (estado de porta)	Sim (contactos secos de saída)		
Temporizador	Sim (ajustável 0, 3, 6 e 9s)		
Consumo a 24V	200 mA	200 mA	200 mA
Consumo a 12V	400 mA	400 mA	400 mA
Dimensões (mm)	208x40x21	250x55x27	267x73x39
Suporte "L"	MEM180PL1	MEM300PL	MEM500PL
Suporte "U"	MEM180PU (vidro 8-15mm)	MEM300PU (vidro 8-15mm)	MEM500PU (vidro 13-20mm)
Suporte "Z"	MEM180PZ	MEM300PZ	MEM500PZ