



Now you can see!

IR Bullet Wireless Camera

I3-330WIP536



User Manual

Notes

- Before operating the camera, we strongly advise users to read this manual and keep it for later use.
- Please use the specified power supply to connect.
- Avoid incorrect operation, shock vibration, heavy pressing which can cause damage to the product.
- Do not use corrosive detergent to clean the body of the camera. If necessary, please use a soft dry cloth to wipe dirt; for hard contamination, use neutral detergent. Any cleanser for high-grade furniture is applicable.
- Avoid aiming the camera directly towards extremely bright objects, such as the sun, as this may damage the image sensor.
- Please follow the instructions to install the camera. Do not reverse the camera, or the reversing image will be received.
- Do not operate the camera in extreme temperatures or extreme humidity conditions.
- Use the power supply supplied authorized by a PROVISION-ISR technician.
- Keep away from heat sources such as radiators, heat registers, stove, etc.
- The instructions in this manual could be outdated; if you need any clarifications you can contact an authorized PROVISION-ISR technician. PROVISION-ISR reserves the right to add changes to this manual and publish it online on our website (www.provision-isr.com): there may be inconsistencies with the latest version. This applies to any and all software upgrades and product improvements, interpretation and modification added. These changes will be published in the latest version without prior notification.
- When this product is in use, the relevant contents of Microsoft, Apple and Google will be involved in. The pictures and screenshots in this manual are only used to explain the usage of our product. The ownership of trademarks, logos and other intellectual properties related to Microsoft, Apple and Google belong to the above-mentioned companies.
- All pictures and examples used in the manual are for reference only.

Introduction

This IPC (short for IP Camera) is designed for high-performance CCTV solutions. It adopts the state of the art video processing chips and utilizes most advanced technologies, such as video encoding and decoding technology, complies with the TCP/IP protocol, SoC, etc to ensure that this system will be extremely stable and reliable. The IPC device should be used together with Provision-ISR's IP manager to enable the quick setting and full utilization of the camera.

1 IE Remote Access

You may connect IPC via LAN or WAN. In this manual, we will use IE v11 for example. The details are as follows:

2.1 Access through IP-Manager

- ① Make sure the PC and IPC are connected to the LAN and that the IP-Manager is installed on the PC. You can install the IP manager form the disc provided with the camera or download it by clicking [here](#).
- ② Double-click the IP-Manager icon on the desktop to run this software as shown below:

Refresh	Device Name	Device Type	Device Model	IP Address	Software Versio
<input type="checkbox"/>	PTZ CAMERA	IPC		192.168.0.126	1.2.1
<input type="checkbox"/>	I4-280IP5MVF+	IPC	I4-280IP5MVF+	172.18.254.101	4.3.0.0(20173)
<input checked="" type="checkbox"/>		ONVIF		192.168.0.149	
<input type="checkbox"/>		ONVIF		192.168.0.99	
<input type="checkbox"/>		ONVIF		192.168.0.126	
<input type="checkbox"/>		ONVIF		192.168.0.157	
<input type="checkbox"/>		ONVIF		192.168.0.192	
<input type="checkbox"/>	IPC	IPC	TD-9423A1	192.168.0.194	4.3.0.0(17512)
<input type="checkbox"/>		ONVIF		192.168.0.129	
<input type="checkbox"/>	Device Name	DVR	SH-8100A-2L(MM)	192.168.0.133	1.3.4
<input type="checkbox"/>	Device Name	DVR	SH-8100A5-8L(MM)	192.168.0.156	1.3.4
<input type="checkbox"/>	Device Name	NVR	NVR5-4100PX+(MM)	192.168.0.184	1.3.3

MAC addr: : : : : : Restore

Tip: Input the IPC MAC address. Click on Restore and reboot the device, within 30 seconds to complete the process.

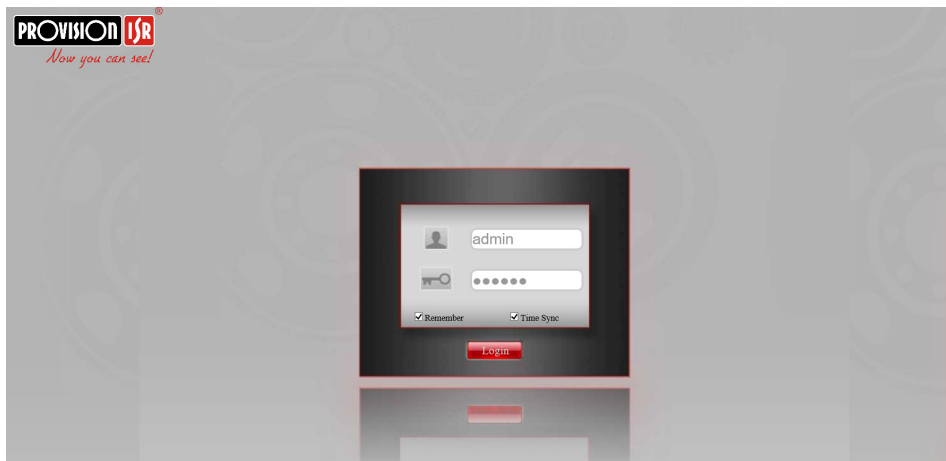
Chosen: 0 / 12

Batch Update | Batch set Net | Batch set stream | Batch Modify PWD | Batch Set Image

Software: [] Browse

USER: [admin] PWD: [] Update

- ③ The device type will be display as “ONVIF”.



④ Double click on the IP address of the system will pop up IE browser and connect to the IPC. IE browser will auto download the Active X control. You must install it in order for the camera to work. After successful installation, a login window will appear as shown below. Input the username and password to log in.



The default username is “**admin**”; the default password is “**123456**”.

1.1 WAN

Allows you to access the camera using a router or virtual server.

① Make sure the camera is well connected and configured via LAN. Log in the camera via LAN and go to the Setup→Network Setup→Local Setup tab→Port to set up the port number.

②In the menu modify the IP according to your needs.

live **setup**

Media

Network setup

Local setup

Remote setup

Wi-Fi

PTZ parameter settings

Advance setup

System setup

Local setup

MAC	9ca3a93bcafcb8
IP Adapted	<input type="radio"/> Open <input checked="" type="radio"/> close
ESEE State	<input type="radio"/> Open <input checked="" type="radio"/> close
UPNP	<input checked="" type="radio"/> Open <input type="radio"/> close
IP Address	192.168.1.168
Gateway	192.168.1.1
Netmask	255.255.255.0
Preferred DNS	8.8.8.8
Alternate DNS	8.8.4.4
port	80

save local network configurations

Port and IP setup

④ Go to the router's management interface through IE browser to forward the IP address and port of the camera to the "Virtual Server". In the picture example below you will see an example of the setting as if the IPC IP address is "192.168.6.6" and the ports are default (9008 & 80)

Port Range						
Application	Start	End	Protocol	IP Address	Enable	
1	9008	to 9008	Both	192.168.6.6	<input checked="" type="checkbox"/>	
2	80	to 81	Both	192.168.6.6	<input checked="" type="checkbox"/>	
3	10000	to 10001	Both	192.168.6.166	<input type="checkbox"/>	
4	21000	to 21001	Both	192.168.6.156	<input type="checkbox"/>	
5	7777	to 7778	Both	192.168.6.206	<input type="checkbox"/>	
6	1029	to 1030	Both	192.168.6.207	<input type="checkbox"/>	

Router Setup

④ Open the IE browser and input your WAN IP and HTTP port to access the camera.

2 IPC Configuration

In this chapter, we will go through the configurations of the IPC.

2.1 Video Configuration

Camera Configuration includes five submenus: Image Setup, Video Stream, OSD Config, Video Mask and Motion Detection area configuration.

2.1.1 Video Setup

Go to "Media" → "Video Setup" interface as shown below.

Video setup

power frequency	50HZ	▼	
Microphone Type	Passive Mic	▼	
profile	high	▼	
Encode Type	audio&video	▼	
Stream	main stream	▼	
ChannelName	IP Camera		<input type="button" value="Copy DeviceName"/>
Resolution	2034x1296	▼	<input type="checkbox"/> Defined resolution
BitRateControlType	Variable	▼	
BPS	2048		(Unit: bps)
FPS	15		(Unit: fps)
<input type="button" value="save encode configurations"/>			

You will see the following options:

Power Frequency: Choose between NTSC (60HZ) or PAL(50HZ)

Stream: Choose between main stream and sub stream

Channel name: Choose the camera name

Resolution: The higher the resolution is, the bigger the image is.

Bitrate Control Type: CBR (Constant) and VBR (Variable) are available. CBR (Constant Bit-Rate) means that no matter how what the video resources are, the compression bitrate will be constant as configured. This will not only facilitate the image quality better in a constant bitrate but also help to calculate the capacity of the recording. VBR (Variable Bit-Rate) means that the compression bitrate can be automatically adjusted according to the change of the video resources with the configured bit-rate as the maximum value. This will help to optimize the storage network bandwidth.

Bitrate Per Second (BPS): Please set it according to your needs while taking in consideration the bandwidth and storage limits.

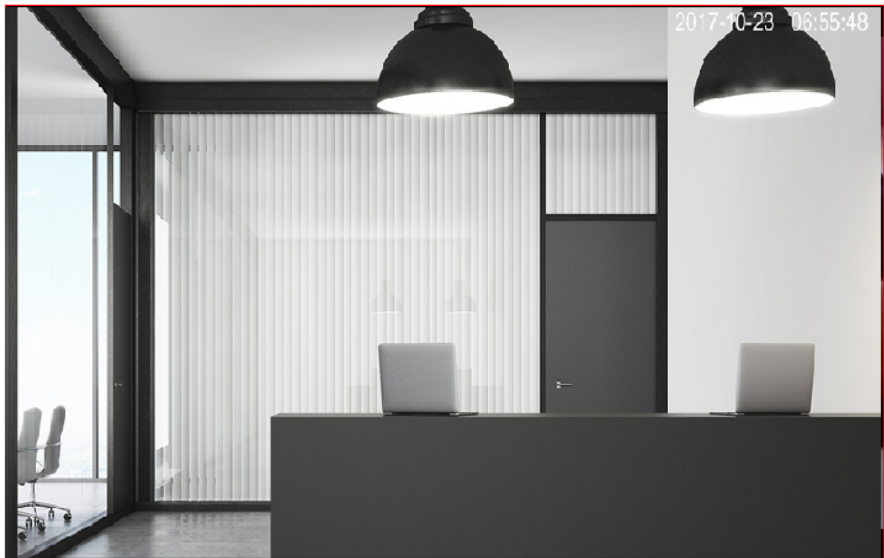
Frame rate (FPS): The higher the frame rate is, the more fluent the video is. However, more storage room will be taken up.

2.1.2 Image Setup

Setting steps:

Go to “Media” → “Image Setup” interface as shown below.

Image setup



Contrast	<input type="range" value="50"/>	50
Brightness	<input type="range" value="50"/>	50
Saturation	<input type="range" value="50"/>	50
Hue	<input type="range" value="50"/>	50
Sharpen	<input type="range" value="17"/>	17 <input type="checkbox"/> Manual sharpness
<input type="checkbox"/> Flip	<input type="checkbox"/> Mirror	
<input type="button" value="save image configurations"/>		

The display parameters are as follows:

<i>Parameter</i>	<i>Meaning</i>
Contrast	Set the image contrast
Brightness	Set the image brightness
Saturation	Set the image saturation
Hue	Set the image hue
Sharpness	Enable/Disable the sharpness and set its level
Image Mirror	Mirror the image horizontally
Image Flip	Flip the image vertically

2.1.3 Image Setting

Go to “Media” → “Image Setting” interface as shown below.

Light Mode

Scene mode

Image Style

Image Style

White Balance

WB Mode

Day/Night Mode

Color Turn black Grade

IRcut Detect mode

IR cut mode

Advance

WDR

Wide Dynamic Range

3D Denoise Strength

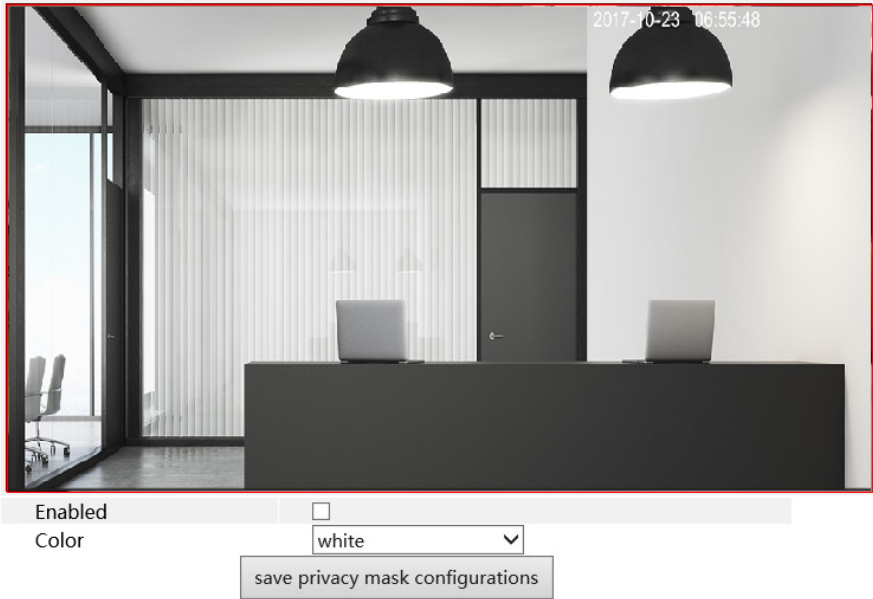
Low light Mode

Scene Mode	Choose between Auto/Indoor/Outdoor
White Balance	Set the white balance of the camera
IR Cut Mode	Set the day/night mode
WDR	Set WDR to deal with advanced light conditions
WDR Range	Set the WDR level
Frequency	Set the frequency to 50/60Hz
3D Denoise Strength	Set the 3D noise reduction level

2.1.4 Privacy Mask

You can set 4 mask areas at most.

Privacy Mask



To set up video mask

1. Enable video mask.
2. draw the mouse to draw the video mask area.
3. Click Save button to save the settings.
4. Return to the live to see the following picture.

To clear the video mask:
Uncheck the Enable box.

2.1.5 OSD Configuration

Go to “Video Config” → “OSD” menu to display the interface as shown below. You may set the device name, time stamp and custom OSDs here. Drag the time stamp and custom OSD over the image on the left side to set their position. Then press the Save button to save the settings.



DatetimeOverlay

Enabled	<input checked="" type="checkbox"/>
RegionX/RegionY	(8.8 , 3.1)
DateFormat	YYYY/MM/DD ▼
TimeFormat	24 ▼
DisplayWeek	<input checked="" type="checkbox"/>

ChannelNameOverlay

Enabled	<input checked="" type="checkbox"/>
RegionX/RegionY	(82 , 95)

DeviceIDOverlay

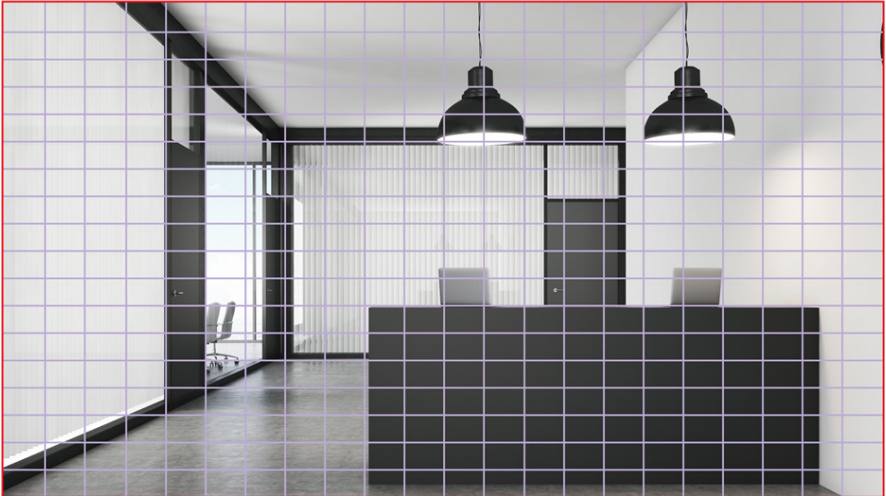
Enabled	<input type="checkbox"/>
RegionX/RegionY	(60 , 100)

save overlay configurations

2.1.6 Motion Detection Area

Go to “Media”→”Motion Detection Area”

1. Drag the mouse to “draw” the area that you wish to motion detection will be applied in.



Enabled



Save reconnaissance locale Settings

Clear Area

2. Click the Save button to save the settings.

3. Click on “Clear Area” to clear the detection area.

2.2 System Setup

The “System Configuration” includes four submenus: Basic Information, Date & Time and Local Config.

2.2.1 Date & Time Configuration

Setting steps:

1. Go to System Configuration → Date & Time menu as shown below.

Time

Device Time	2019-03-29 11:21:16
Time Zone	GMT+02:00 ▼
Calendar Style	Common Era ▼

Local Time Sync.

Computer Time	2019-03-29 11:44:15	Sync
---------------	---------------------	------

NTP Time Sync.

NTP Server Sync. State	<input type="radio"/> Open <input checked="" type="radio"/> close
NTP Server	

save time configurations

2. Set the time zone.
3. Change the time zone according to your location. You may synchronize the camera time with an NTP server (Internet connection required) or synchronize the camera time with the time of the computer you are using.

2.2.2 System Initialization

1. Go to System Configuration → Initialization menu as shown below.

Initialization

Reboot Now...

Click button below to reboot IP Camera.

Reboot Now...

Restore

Click button below to restore default factory.

Note: This Function will reboot the system automatically!

Restore

upgrade

Please click the button below to select the upgrade File, and then perform upgrade

upgrade

2. Reboot Now – Reboot the camera
3. Restore – restore the system to it's default configuration.
4. Upgrade – Choose an upgrade file to locally upgrade the camera.

2.2.3 Device Info

In the “Basic Information” interface, you can view all the necessary information related to the IPC, as seen below:

Device Info

Device Name	I2390WIP536
Device Model	IPC
Hardware Version	1.3.0.
Software Version	2.8.12.5761123103
Release Time	2018/12/12 14:37:16
Alarm Number	0

The following table will explain the available detail field.

<i>Parameter</i>	<i>Meaning</i>
Device name	Name of the device – can be modified from the OSD settings
Device Model	The model of the device
Software version	The current software version
Hardware version	The hardware version of the device
Release Time	The software build-date

5 Q & A

1. Q: How to find my password if I forget it?

A : The default username is “admin” and the default password is “123456”.

If you have changed the password and you can't remember it, use the physical reset button on the camera (Press and hold for few second).

User name: admin

Password: 123456

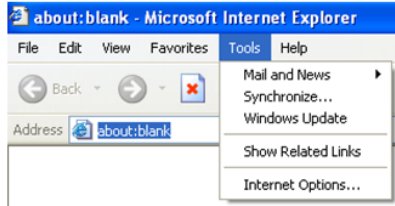
2. Q : IP tool cannot search for devices, why?

A :It may be caused by the anti-virus/firewall software on your computer. Please disable it and try to search device again.

3. Q : IE cannot download ActiveX control. How can I do?

a. Your IE browser probably set to block ActiveX controls. Please perform the following steps:

- ① Open IE browser. Click Tools-----Internet Options....



- ② Select Security-----Custom Level....Refer to Fig 4-1
- ③ Enable all the sub-options under “ActiveX controls and plug-ins”. Refer to Fig 4-2

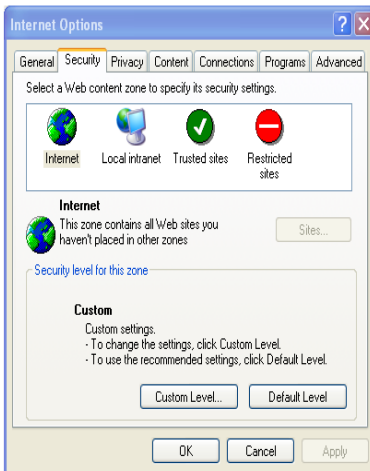


Fig 4-1

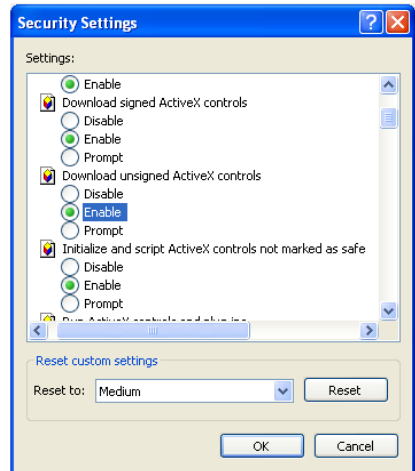


Fig 4-2

- ④ Click ok to finish setup.

b. Other plug-ins or anti-virus blocks ActiveX. Please uninstall or close them.