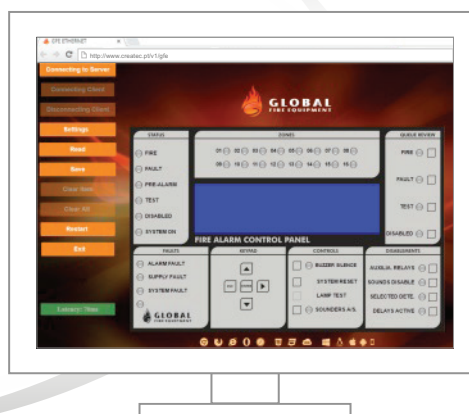
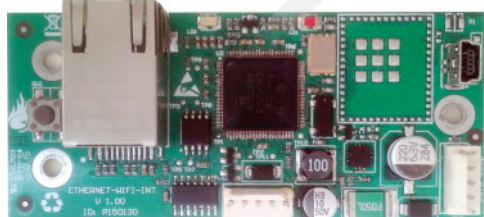


# GFE-TCP-WEB

## Remote access TCP/IP interface



GFE-TCP-WEB is a new interface for TCP/IP communication, which will bring new functionalities to JUNIOR V4, JUNO NET and ORION-PLUS panels. It uses our data-loop protocol and an external web-server to send and receive information from panel. In this way, supervision over individual systems via web browser can be achievable easily. Panel status and operation is accomplished via an HTML5 webpage hosted in server provided by GFE in several languages and remainder customization options.

Network and web-server configurations are stored via available USB connector. Drivers, webpage and configuration manual are all available in our website.

Installers, end-users and maintenance providers will benefit the most of this new tool as it will increase responsiveness to any event reported by the system.

### MAIN FEATURES

- No port forwarding
- 24/7 panel monitoring
- Easy remote technical support
- Free web-server account
- Compatible with majority of web-browsers

### TECHNICAL SPECIFICATIONS

SUPPLY VOLTAGE	20 to 30 V DC
SUPPLY CURRENT	28 mA
CONFIGURATION	USB mini
COMMUNICATION CONNECTOR	RJ45
INPUT	Restart switch
CONFIGURATION OPERATING SYSTEM	Windows XP/7/8/10, Mac OS, Linux, Android, IOS
OPERATING TEMPERATURE	-10°C a 50°C
DIMENSIONS	90 (L) x 40 (W) mm
WEIGHT	24 g

### ORDER CODE

GFE-TCP-WEB

REMOTE ACCESS TCP/IP INTERFACE

#### Global Fire Equipment SA

Sítio dos Barrabés, Armazém Nave Y, Caixa Postal 908-Z  
8150-016 São Brás de Alportel. PORTUGAL

Telephone: (00351) 289 896 560 / Email: info@globalfire-equipment.com / Web: www.globalfire-equipment.com



GSS GROUP