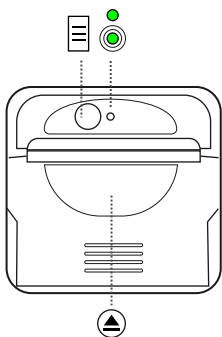
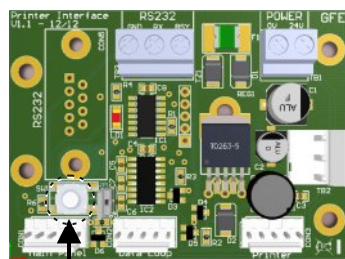


## REPORTING DETAILS



- LED Green:**
- Continuous on – normal condition.
  - ◐ Flashing – report error (normally out of paper).
- Push Button:** Feed paper.
- Open Case:** Pull to open case.



**Push Button**  
Press push button on power on to print an internal report.

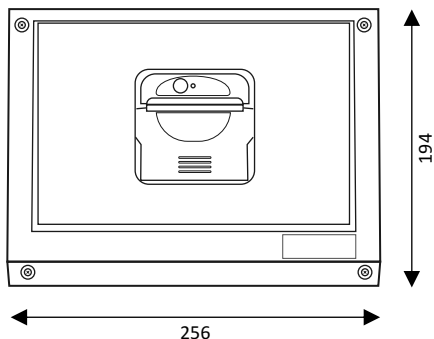
## MECHANICAL SPECIFICATION

### Enclosure Construction Material

White ABS

### Weight

Including packaging - 633 g



*NOTE: All dimensions in mm*

## TECHNICAL SPECIFICATIONS

SUPPLY VOLTAGE	20 to 30 V DC
SUPPLY CURRENT	Standby: 43 mA max. / Printing: 500 mA max.
INTERFACE RS232	J-NET-ADV-COMMS-485 (1200, 8, N, 1)
DATA LOOP INTERFACES	J-NET-INT-485 or J-NET-INT-FO or J-NET-INT-TCP/IP (38400, 8, E, 1)
CONNECTIONS	5 way molex (flat cable provided)
PAPER	57.5 mm (+/-0.5) width Max. role diameter 36 mm (aprox. 12 m)
MAX. CABLE SIZE	2.5 mm <sup>2</sup>
MAX. R. HUMIDITY	95% RH Non-Condensing
OPERATING TEMPERATURE	0°C to 50°C
DIMENSIONS	256 (L) x 194 (W) x 75 (H) mm
WEIGHT	633 g
<b>ORDER CODE</b>	<b>DESCRIPTION</b>
<b>GFE-NET-PRINTER</b>	NETWORK PRINTER WITH PLASTIC ENCLOSURE

# GFE-NET-PRINTER

## External Line Thermal Printer

The **GFE-NET-PRINTER** is an external thermal line printer which is used to obtain a hardcopy of all recorded events from a Junior or Juno Net panel. The **GFE-NET-PRINTER** can be connected either via the Juno Net panel's printer output or alternatively via the data loop using RS-232, RS-485, Fiber Optics or TCP/IP J-NET-INT interfaces. Junior panels can only be connected via the data loop.

All recorded events are referenced by date and hour and saved in the panel's NVRAM (non-volatile memory).

**Note:** When connecting **GFE-NET-PRINTER** to the Juno Net panel via the panel's printer output, the J-NET QUART chip is required to be inserted in the appropriate IC socket located on the panel's main PCB board. For more details please refer to the panel's installation manual. This type of connection is not available for the Junior panel.



## FEATURES

Easy installation and maintenance

Sleek low-profile housing

SMD circuit board design.  
High quality and reliability guaranteed

## GLOBAL FIRE EQUIPMENT S.A.

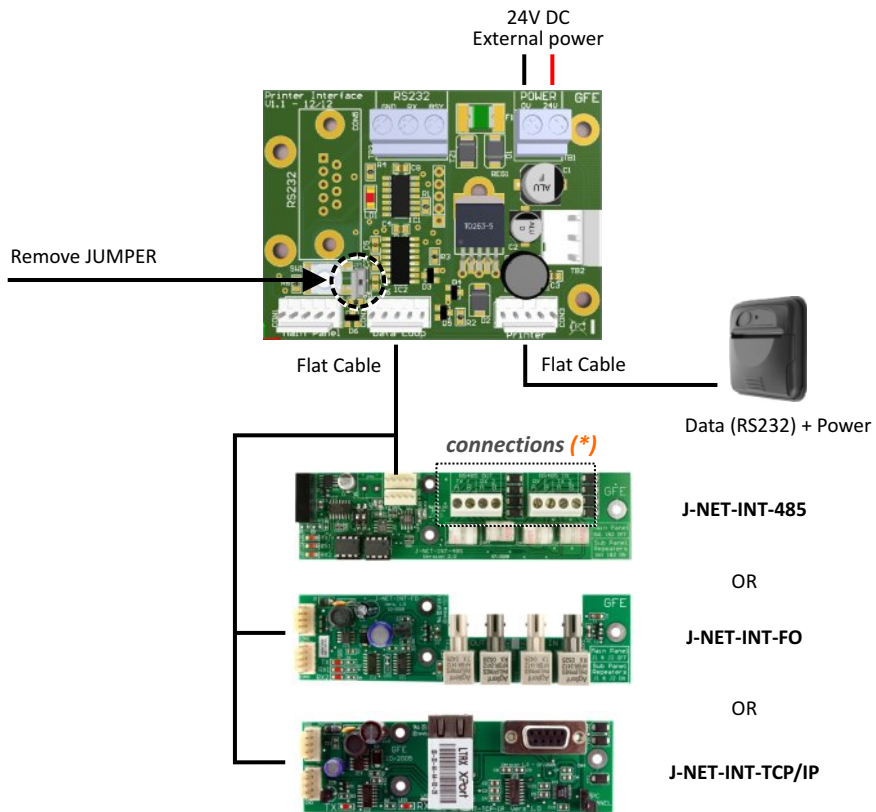
Sítio dos Barrabés, Armazém Nave Y, Caixa Postal 908-Z, 8150-016 São Brás de Alportel - PORTUGAL  
Tel: +351 289 896 560 • Sales: sales@globalfire.pt • Technical Support: techs@globalfire.pt • www.globalfire.pt



CONNECTIONS

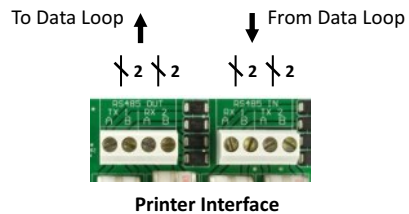
Only one of the next connections is possible.

**C1** Remote Connection with Data Loop

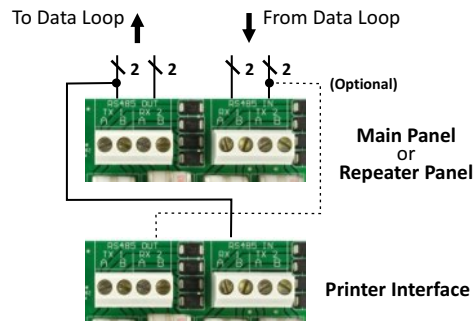


\*

OPTION A

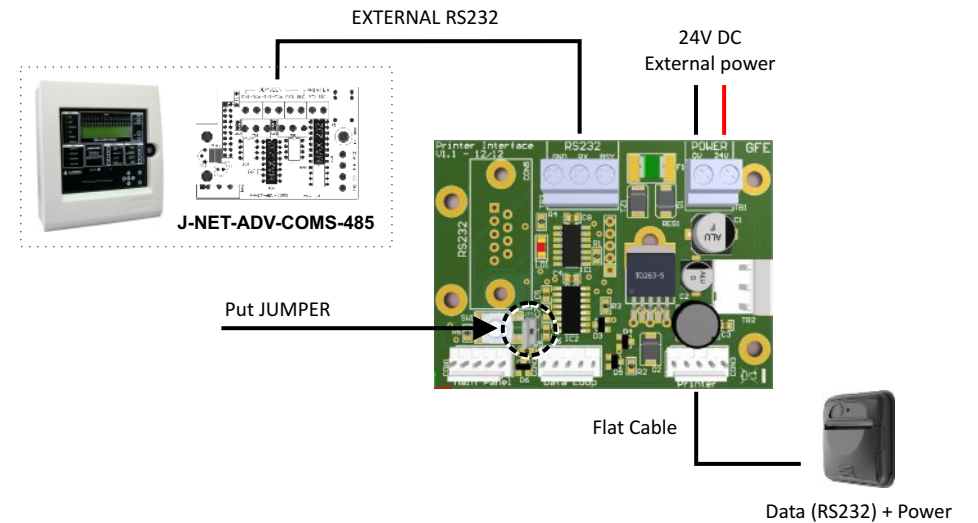


OPTION B



CONNECTIONS

**C2** Remote connection with RS232  
(J-NET-QUART is necessary on main panel)



**C3** Remote connection with JUNO

