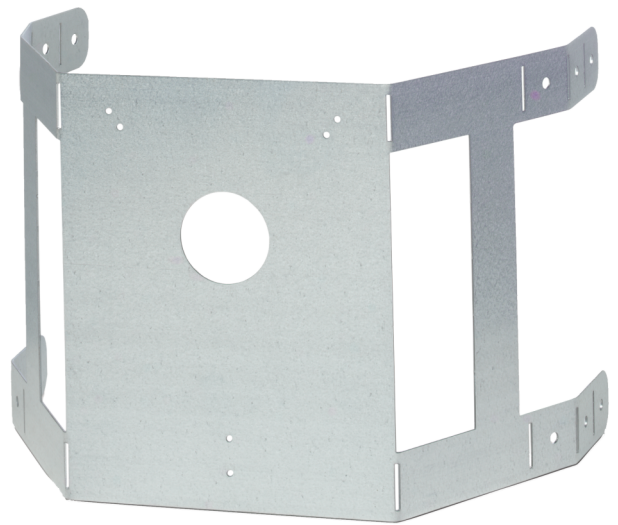




FDD710MB

Mounting Bracket For FDD710, Irregular Duct Shapes

The FDD710MB allows the FDD710 duct detector to be mounted on irregular shaped or circular ducts. Four tabs are easily bent to adapt to the shape of the duct. The FDD710 then mounts on the flat surface.



Details

- Four tabs adapt to the shape of the duct

FDD710MB

Mounting Bracket For FDD710, Irregular Duct Shapes

Technical specifications

Physical

Mounting type	Tie around
---------------	------------

Environmental

Environment	Indoor
-------------	--------

Compatible products

Category	Reference	Description
Detection device	FDD710	Duct Detector, Single Pipe Universal



As a company of innovation, Carrier Fire & Security reserves the right to change product specifications without notice. For the latest product specifications, visit firesecurityproducts.com online or contact your sales representative.

Last updated on 7 September 2023 - 17:23