

# DC106

## Recessed mount contact, flanged

---

The DC106 recessed contacts are designed for applications where the added integrity of mounting screws is needed. The units can be used in wooden and metal frame doors and windows.

### Easy Installation

---

The two mounting holes provide additional strength to prevent the contact and magnet from becoming dislodged due to environmental changes. This can occur when the door or window frames become warped and misaligned from moisture or the settling of a building.



### Details

---

- Flange mounting for positive mounting
- Attractive, added security of recessed installation
- Easy installation
- Standard 2.5 m wire length
- Tamper loop provided
- Built-in resistors available to special order

# DC106

## Recessed mount contact, flanged

### Technical specifications

---

#### General

Application type	Recessed mount
Contact type	NC
Connectivity	4 wires, 2.5 m

#### Wired / wireless

Wired / wireless	Wired
Operating gap	23 mm

#### Physical

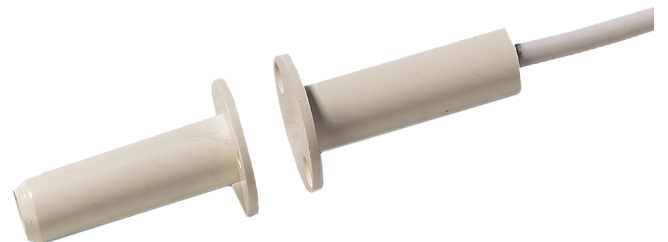
Physical dimensions	19 x 33 mm
Dimensions magnet	19 x 33 mm
Diameter	9.5 mm
Borehole diameter	9.5 mm
Colour	White

#### Environmental

Operating temperature	-40 to +65°C
-----------------------	--------------

#### Regulatory

EN50131 Grade	Grade 2
---------------	---------



As a company of innovation, Carrier Fire & Security reserves the right to change product specifications without notice. For the latest product specifications, visit [firesecurityproducts.com](https://firesecurityproducts.com) online or contact your sales representative.

Last updated on 2 April 2024 - 12:07