

ATS1220

Expansor DGP de 4 Zonas - Caixa Plástica Pequena

Data Gathering Panels

Data Gathering Panels (DGP) are used to expand the number of alarm inputs on the system and allow inputs and relays to be connected at a location remote from the Advisor MASTER panel. DGPs communicate via poll & reply messages and send alarms to the control panel for processing. The DGPs collect information from detectors, door contacts and other similar devices. There are DGPs available for conventional devices, wireless devices as well as for intelligent addressable devices. A special DGP is also available for collecting the information for either four doors or lifts.

System databus connection

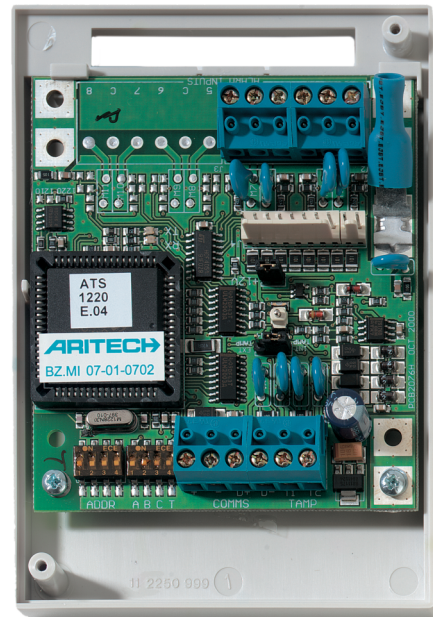
The system databus is used to connect Data Gathering Panels (to provide extra zones) and Arming Stations to the ATS control panel. Remote devices can be up to 1.5 km from an ATS control panels. Arming stations and Data Gathering Panels must be connected via a 2 pair twisted shielded data cable from the system databus connection. (WCAT 52 is recommended). The shield of the data cable should be connected to earth at the ATS control panel and should be left disconnected at any other end.

Functionality

Should a failure in communications occur, the Data Gathering Panel remembers the last alarm in a system, helping to identify possible reasons for faults. Up to 15 DGP's can be connected directly to the Advisor Master panel. For every DGP expanded to more than 16 inputs, the total number of Data Gathering Panels in a system reduces by one. If a system has all its Data Gathering Panels fully expanded to 32 inputs, the physical number of Data Gathering Panels in a system becomes 8.

Product Overview

4-zone DGP with Output Connector (ATS1644 plastic housing included). Depending on the basic capacity of the control panel up to 15 input expanders can be used at a maximum distance of 1,5km from the control panel.



Detalhes

- 4 inputs on board
- 8 OC outputs on board
- Compatible with Axon and Advisor Advanced panels
- Plastic enclosure with opening tamper sensors
- Data bus monitoring

ATS1220

Expansor DGP de 4 Zonas - Caixa Plástica Pequena

Especificações técnicas

Geral

Tipo de expansor	Expansor de entrada
Linha de produto	Advisor Advanced, ATS Master
Tipo de ligação	Databus connection
Compatibilidade	Advisor Advanced, Advisor Master
Distância máx. do painel	1.5 km
Máx. por painel	15 / 30 (depending on panel type)
Cabo especificado	WCAT52 / WCAT54 or equivalent

Sistema

Endereçamento	DIP Switches
Resistência fim-de-linha	Selectable

Entradas

Total	4
Incorporadas	4

Saídas

Incorporadas	8
Tipo de saídas	Open Collector
Número máximo de saídas	16

Elétrica

Tensão de operação	10.5 to 13.8 VDC
Consumo de corrente	53 mA
Fonte de alimentação integrada	Não

Físico

Dimensões físicas	124 x 87 x 34 mm (W x H x D) 90 x 80 mm (PCB dimensions)
-------------------	---

Ambiental

Temperatura de operação	-10 to +50°C
Humidade relativa	95% noncondensing
Ambiente	EN50130-5; Classe II - Interior (geral)
Classificação IP	IP30

Regulamentação

Conformidade	CE
Certificação	CE



Como empresa de inovação, a Carrier Fire & Security reserva o direito de alterar as especificações do produto sem aviso prévio. Para obter informações sobre as especificações mais recentes do produto, visite pt.firesecurityproducts.com online ou contate o departamento comercial.

Last updated on 11 September 2024 - 9:52