

ASW367

Sirene Vermelha de Parede com Alarme Visual EN54, Base Funda - Convencional

General

The ASW367 is a RED, general purpose, wall mount, electronic sounder and beacon for fire alarm applications. It features a special base containing all wiring connections allowing for easy placement or removal of the device. With an EN54-23 approved coverage pattern of W-2.4-7.5 for the beacon, each ASW367 may be mounted up to 2.4 m high and cover a square room of 7.5 x 7.5 m with a single device.

Easy and fast installation

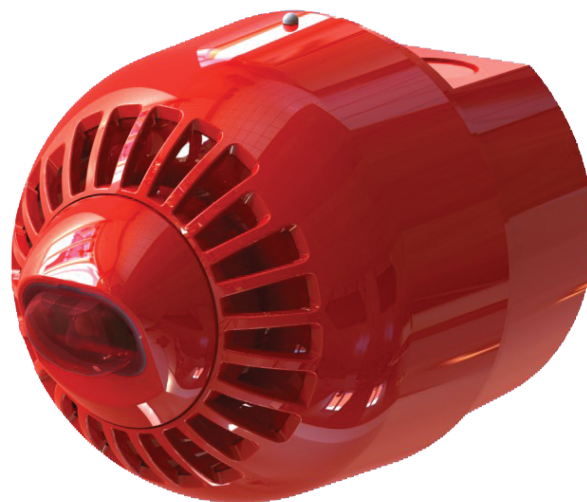
The ASx360 series alarm sounder/beacons allow faster installation and maintenance thanks to an innovative mounting base. Dispensing with the need for locking screws these devices use TimeSaver™ bases from the 630 series detector lines. Heads are simply locked onto the base with a “twist and click” action, allowing fitting or removal at any time because the base is the only component that needs to be wired. As the cabling requirement is reduced, commissioning time and costs are naturally reduced as well.

Efficient and versatile

The ASx360 series sounders provide high sound output at a low current, thus reducing power requirements and system cost. They are supplied with a volume control as standard, allowing final audio adjustments to be made during installation. With a choice of 32 different tones (see tones table in manual), which are switch selectable, the required tone can be selected during installation.

The ASx360 series beacons utilise a specially designed lens giving a uniformed light output over the specified coverage area.

The mechanism for locking the device to the base may be activated if required. Once activated, a special tool is required to remove the sounder from the base.



Detalhes

- High sound output with Pulse Alert™ technology
- 32 Tones user selectable
- Automatic synchronisation
- Volume control and adjustable flash rate
- Anti-Tamper locking mechanism
- Deep mouting base with side cable entry and wiring to the base
- Weatherproof
- Seperate sounder and beacon and control
- EN54:3 and EN54:23 approved, CPR Certified

ASW367

Sirene Vermelha de Parede com Alarme Visual EN54, Base Funda - Convencional

Especificações técnicas

Geral

Compatibilidade	All conventional notification circuits
Monitorização de linha	Polarised input

Elétrica

Tipo de fonte de alimentação	VDC
Tensão de operação	17 to 60 VDC
Consumo de corrente	5.1 mA (sounder) 20 mA @ 0.5 Hz (VAD)

Sirene

Nível de saída	85 to 97dB(A) @ 1 m (tone dependant)
Tons selecionáveis	32
Sincronização	Phased start

DAV

Cor	Red
Classificação	W-2.4-7.5
Cobertura do piso	56.25 m ²
Frequência de Flash	0.5 Hz
Sincronização	Supported

Físico

Dimensões físicas	97.5 x 117 mm (Ø x D)
Peso líquido	215 g
Cor	Vermelho
Tipo de montagem	Montagem na base, Montagem em parede
Posição de montagem	Parede
Base de montagem	Profundo
Material	Alto impacto policarbonato
Textura	Smooth

Ambiental

À prova de vandalismo	Não
Temperatura de operação	-25 to +70°C
Humidade relativa	5 to 95% noncondensing
Ambiente	Interior, Exterior
Classificação IP	IP65

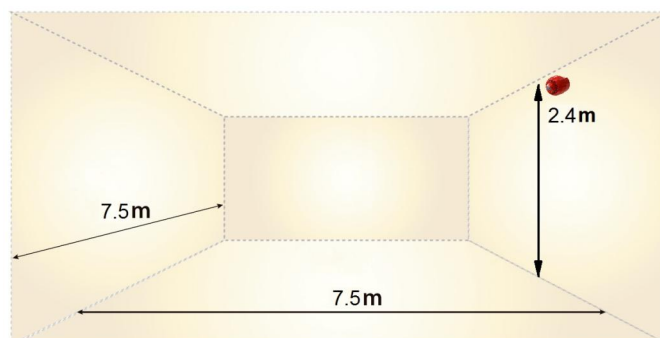
Regulamentação

Conformidade	CE, REACH, RoHS 3, WEEE
Certificação	CPR
Standards	EN54-3; EN54-23

Produtos compatíveis

Categoria	Referência	Descrição
Dispositivo notificação	ASW366	Sirene Vermelha de Parede com Alarme Visual EN54, Base Baixo Perfil - Convencional
Dispositivo notificação	ASW366W	Sirene Branca de Parede com Alarme Visual EN54, Base Baixo Perfil - Convencional
Dispositivo notificação	ASW367W	Sirene Branca de Parede com Alarme Visual EN54, Base Funda - Convencional

EN54-23 Coverage: W-2.4-7.5



Como empresa de inovação, a Carrier Fire & Security reserva o direito de alterar as especificações do produto sem aviso prévio. Para obter informações sobre as especificações mais recentes do produto, visite pt.firesecurityproducts.com online ou contate o departamento comercial.

Last updated on 16 September 2024 - 8:38