

AS376

Sirene Vermelha Alta Potência, Seleção de Toque - Convencional

General

The AS376 is a high output electronic sounder for fire alarm applications. It offers a IP66 rating, which makes it ideal for outdoor applications. It also features a special base containing all wiring connections and allow for easy removal/placement of the sounder. To allow for even more flexibility, the user can select between 64 tones and also have the option of a 3rd stage tone.

Easy and Fast Installation

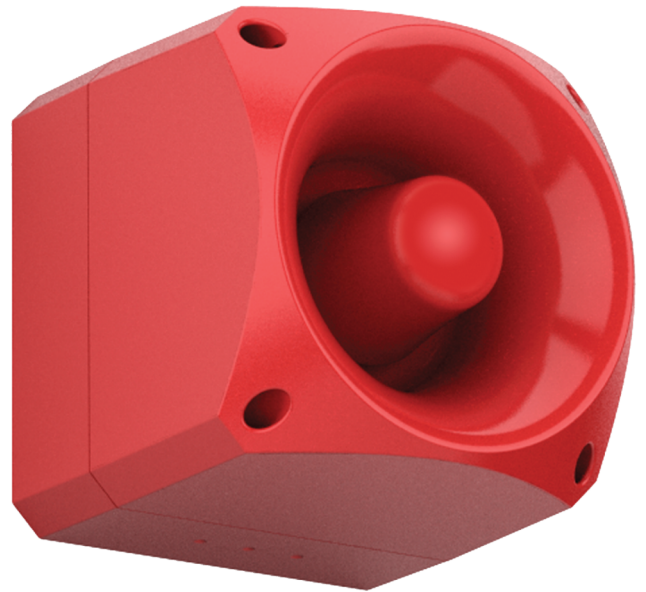
The AS376 sounder allows faster installation and maintenance thanks to an innovative mounting base. Connections are made to the base during the initial wiring phase, which results in faster and more reliable installation. In addition, the head clicks into place and is fixed by four quarter turn fasteners, avoiding the need to screw up four individual screws thus enabling faster installation and accurate seal compression for weatherproofing.

Efficient and versatile

The AS376 provide high sound output at a low current, thus reducing power requirements and system cost. The AS376 sounder is supplied with a volume control as standard, allowing final audio adjustments to be made during installation.

With a choice of 64 different tones (see tones table in manual), which are switch selectable, the required tone can be selected during installation. A second and third tone, is available if extra wires are installed in the sounder circuit.

IP66 as standard, means that the AS376 can be installed in almost any location.



Detalhes

- High sound output
- Low current consumption
- 64 Tones user selectable
- Automatic synchronisation
- Volume control
- Wiring directly to base
- Three stage alarm
- IP66

AS376

Sirene Vermelha Alta Potência, Seleção de Toque - Convencional

Especificações técnicas

Geral

Monitorização de linha Polarised input

Elétrica

Tensão de operação 17 - 60 VDC (EN54-3 / fire applications)
10 - 60 VDC (non-fire applications)

Consumo de corrente 10 - 50mA @ 24 VDC ((see tone table in manual))

Sirene

Nível de saída Sound output at 1 m (see tone table in manual):
104 to 116dB(A) @ 24 VDC
Continuous operation

Tons selecionáveis 64

Sincronização Phased start (automatic)

Físico

Dimensões físicas 166 x 166 x 149 mm (W x H x D)

Peso líquido 1100 g

Cor Vermelho

Material Alto impacto policarbonato

Ambiental

Temperatura de operação -25 to +70°C

Ambiente Exterior

Classificação IP IP66

Regulamentação

Certificação EN54-3



Como empresa de inovação, a Carrier Fire & Security reserva o direito de alterar as especificações do produto sem aviso prévio. Para obter informações sobre as especificações mais recentes do produto, visite pt.firesecurityproducts.com online ou contate o departamento comercial.

Last updated on 27 September 2024 - 11:16