

## ADDRESSABLE CONTROL PANEL – AM2000N

### DESCRIPTION

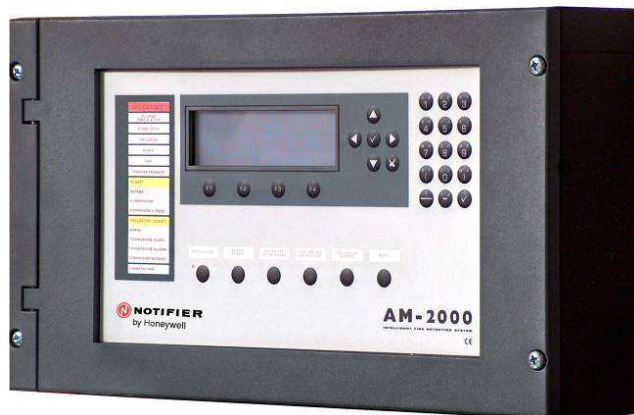
**AM2000N** is a microprocessor addressable control panel for fire alarm systems management, developed in compliance with EN-54.2 and EN-54.4 regulations.

This control panel has 2 addressable loops that can manage 99 detectors and 99 modules each, for a total of 198 detectors and 198 i/o modules. The control panel is also programmable through PK2000 pc software, that allows: configuration, storing and printing.

Available, on request, with MODBUS protocol.

### MAIN FEATURES

- Microprocessor-based system
- 2 addressable communication loops
- Each line can manage 99 detectors + 99 input/output modules
- Graphic backlit LCD display 8 lines, 40 columns (240X64 dots).
- 2 serial interfaces in standard version:
  - 1 RS-485 interface to connect up to 16 repeaters LCD6000N and LCD6000A;
  - 1 RS-232 interface predisposed for PK software.
- 4 access levels designed according to **EN-54.2** and **EN.54.4** standards.
- 3 password levels (Operator - Maintenance - Configuration).
- Configurable descriptions: 32 characters for point; 32 characters for zone description.
- 150 physical zones and 400 logic groups.
- User-programmable CBE (Control-by-event) equations to program actions to be performed, using logic operators (And-Or-Xor-Delay-etc.).
- History log 999 events in non volatile memory.
- Real time watch.
- Self loop configuration with self device recognition.
- Software functions configurations for in field devices.
- Auto-recognition of points with the same address.
- Alarm and fault management.
- Programmable detectors alarm threshold.
- Detector clean alarm signalling.
- Low sensitivity detector signalling.
- Automatic night/day mode.
- WalkTest function for each zone.
- Keyboard with specific function keys: evacuation, delay reset, buzzer mute, sounder silence/restore, reset.
- Alphanumeric keys for in field configuration.



### OUTPUTS

- Supervised sounders output.
- Voltage free contacts relay output:
  - general alarm;
  - general fault.

### POWER SUPPLY

Control panel is powered by mains and in mains fault condition it will continue normal operation, thanks to batteries.

Mains requirements:

- Voltage: 230 Vac single-phase -15% ÷ +10%.
- Frequency: 50 / 60Hz.
- Current: 0,5 A.
- Power supply 24Vcc (27.6Vdc -10% ÷ +2% ripple max. 100mVpp) 2,1A tot, (panel's power, user output, power supply for addressable devices on loop).
- User output for auxiliary loads; in example: bells, sounders, etc.
- Battery charger:
  - Output voltage: 27,6Vdc
  - Output current: 1A - ripple max 100m Vpp (with temperature compensation)
  - Batteries: 2 x 12V 18 Ah max.
  - Signalling: Low batteries, charger fault, battery fault.

### ENVIRONMENTAL FEATURES

- Temperature range: - 5° C ÷ + 40° C.
- Humidity: 10 ÷ 93 % (without condense).
- Stock temperature: - 10° C ÷ + 50° C.

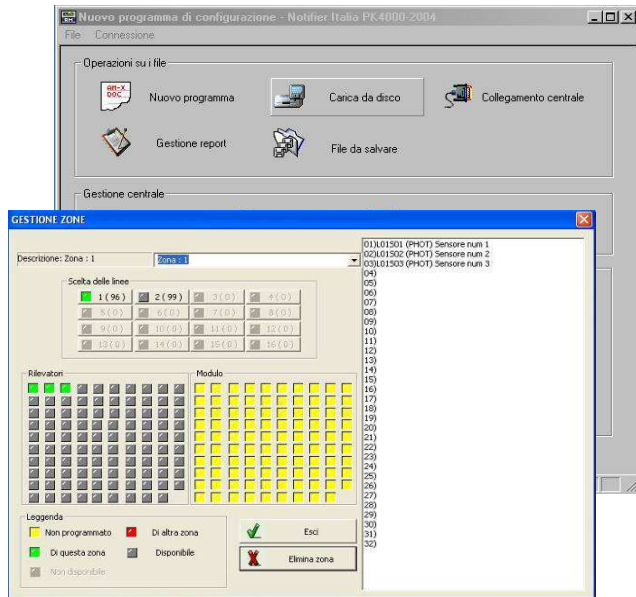
### MECHANICAL FEATURES

- Weight: 6 Kg.
- Dimensions: 267 x 483 x 111 mm.

## PK2000

PK2000 is a PC software for **AM2000N** control panel, and allows to:

- Transfer and show control panel's configurations on PC.
- Transfer programs from PC to control panel.
- Create and manage a file-archive with configurations, editable in any moment and transferable to the control panel



The programming functions that can be realized by using this software are the same the user can carry out working on the control panel.

PK software is Windows XP compatible.

The communication between control panel and PC is realized through RS232 serial port.

## OPTIONAL BOARDS

### SIB600W:

Microprocessor-based communication board for new concentration system. SIB600W is equipped with Ethernet port (LAN TCP/IP) and USB port for PC and printer. SIB600W is linkable with all compatible external devices.

### SIB600-OEM:

Microprocessor-based communication board, endowed with an RS232/485 output for connection with NOTI-FIRE-NET-2000N with CEIABI protocol or MODBUS on request (only for fire system).

## LCD PANELS REPEATER

Remote panels with LCD display for **NOTIFIER AM Series** remote management.

Panels and annunciator are endowed with backlit graphic LCD display 320x240 dots. Repeaters are characterized by high brightness and contrast that assure clear view in any light environment condition. The connection with panels is performed by RS-485 connection.

### LCD6000N

#### Fire repeater.

LCD6000N is endowed with seven keys that allow navigation through different menus and execution of system management functions: silent, reset, disablement and lamp test.



### LCD6000A

#### Zone programmable repeater.



LCD6000A shows active panel events with relative devices or zones. The zone displayed are configured by PC with PK software.

 **NOTIFIER**<sup>®</sup>  
by Honeywell

Notifier Italia S.r.l.  
Via Achille Grandi 22  
20097 San Donato  
Milanese (MI)  
Italia

Tel.: +39 02 51 89 71  
Fax: +39 02 51 89 730  
E-Mail: [notifier.milano@notifier.it](mailto:notifier.milano@notifier.it)  
[www.notifier.it](http://www.notifier.it)