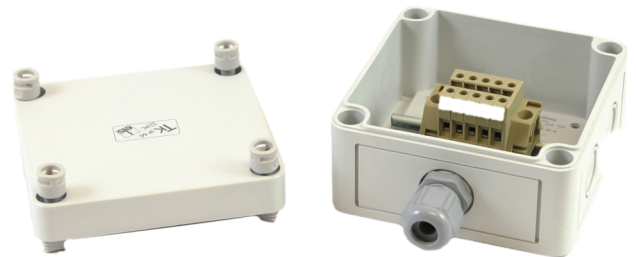


AAECU-JUN

AlarmLine II Analogue EN LHD Junction box

General

The AAECU-JUN is a junction box which must be used when joining two pieces of AlarmLine II Analogue EN LHD Cable. This is key to ensure that the junction does not influence the performance of the cable and integrity of the whole detection system.



Details

- VdS EN54-22:2015/prA1:2007

AAECU-JUN

AlarmLine II Analogue EN LHD Junction box

Technical specifications

Physical

Mounting type	Surface mount
---------------	---------------

Regulatory

Certification	CE, EN54-22, VdS
---------------	------------------



As a company of innovation, Carrier Fire & Security reserves the right to change product specifications without notice. For the latest product specifications, visit firesecurityproducts.com online or contact your sales representative.

Last updated on 13 September 2024 - 13:13